

CURFLO

PREMIER

MANUFACTURER
OF AFTERMARKET ANSI PUMPS



G-LINE PUMPS

SOLUTIONS UNIQUELY ENGINEERED FOR YOU



CURFLO G-LINE

INFORMATION

(Mechanical Seal & Packed Models Available)

Materials Offered:

- WCB (Carbon Steel w/ CD4 Impeller)
- CD4

All Frame Sizes Available:

- STX
- LTX
- MTX
- XLTX

Stuffing Box Configurations:

- Standard Bore
- Big Bore
- Flow Modifier Plus

Multiple Sealing Options:

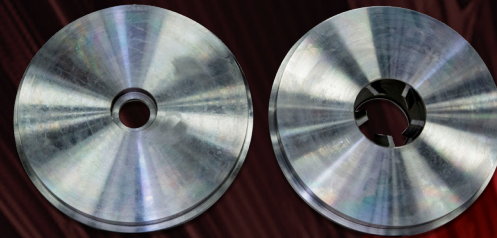
- Packing
- Type 1 Mechanical Seals
- Cartridge Mechanical Seals
- Double Mechanical Seals

Variants we Produce:

- Standard ANSI models
- Self-Priming models
- Low-Flow Models

Fast, Efficient, & Economical Shipping:

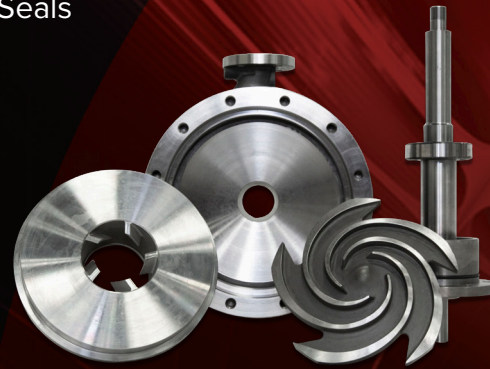
- Spare Parts Ship in 1 day
- Complete Bare Pumps ship in 1 week
- Skid Packages ship in 2 weeks



Standard Bore, Big Bore, Flow Modifier Plus
(Tapered Bore with Flow Inducers)

Multiple Sealing Options Available:

Packing, Type 1 Seals, Cartridge Seals,
Double Seals



All CURFLO components are fully interchangeable
with OEM spare parts.



We offer: Standard Configurations, Self Priming
models, and Low Flow models

CURFLO

e-mail: sales@curflo.com | phone: 281.479.5000 | web: curflo.com

Curry FluidPower

