

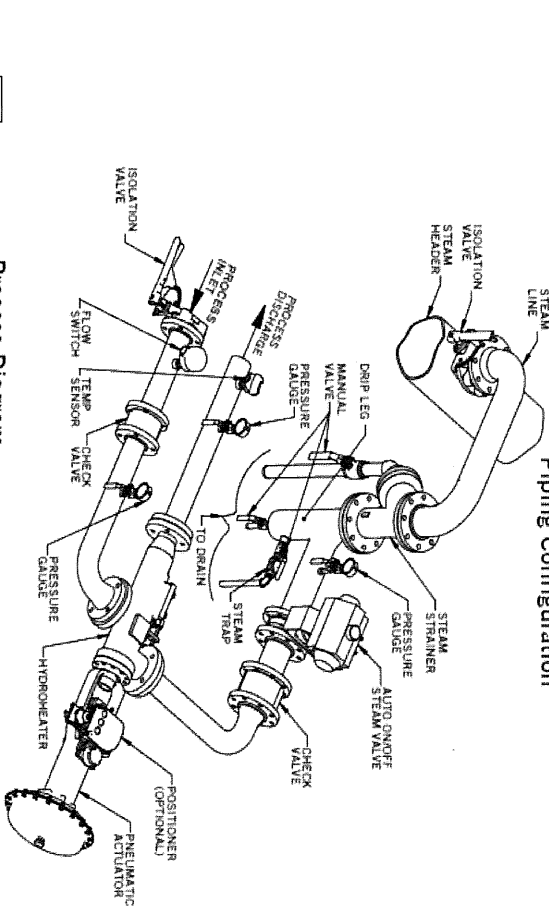
Recommended Installation Hydroheater®

Installation Notes:

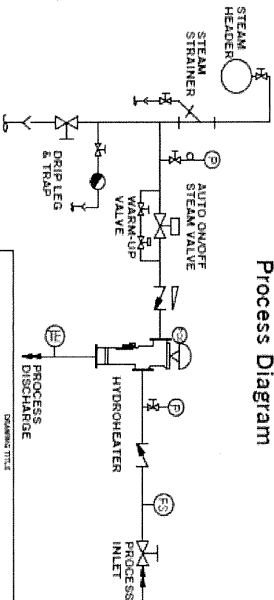
1. Recommended straight lengths of pipe without directional or process flow changes:
Inlet: 3 pipe diameters minimum
Discharge: 10 pipe diameters minimum
2. Temperature sensor should be located 20-40 pipe diameters from the heater discharge (process parameters may influence exact location).
3. For units 8" and above (K&L5 and larger) a steam warm-up valve (as shown on the Process Diagram) may be recommended. Contact Hydro-Thermal Customer Service for further information.
4. Control system should verify process flow before permitting Auto On/Off Steam Valve to open, either through Flow Switch shown or another method.
5. Abrupt flow variations can cause temperature swings. The control system designer should allow for transient conditions and tune the temperature loop accordingly. If process flow is shut off quickly, the heater should be closed and Auto On/Off Steam Valve should be disabled.
6. See sizing sheet for maximum discharge pressure. Pressure gauges should be installed for verification.
7. Steam Check Valve should be located 3-5 pipe diameters upstream from the heater.
8. Hydroheater can be oriented in any position, however, the preferred orientation is with steam entering horizontally or if not then, from above. Steam lines entering from below the unit should be supported by a hanger. Larger units (typically 4" and above) the Hydroheater is best supported horizontally.
9. Steam line between the Auto On/Off Steam Valve and the heater should slope downward toward the heater.
10. Check Valve at process inlet may not be required for all fluids or system configurations.
11. Isolation Valves should be provided on each side of the Hydroheater for maintenance purposes.
12. Steam Strainer to have maximum screen size noted in the IOM Manual.
13. All piping, including downstream components, should be rated for the supply steam pressure or have an adequate safety relief.
14. For further details, see IOM manual or call Hydro-Thermal Customer Service at 1-800-952-0121 or email service@hydro-thermal.com.

© Hydro-Thermal Corporation, all rights reserved, 2010

Piping Configuration



Process Diagram



Recommended Installation Hydroheater

DRAWING NUMBER	DATE
HH-040	06/24/10
REVISION	B