

CARLYLE SEMI-HERMETIC COMPRESSORS

GUIDE TO 06D PART NUMBERING SYSTEM:

MODEL	PRODUCT SERIES			UNLOADER VARIATIONS	MOTOR SIZE	CFM DISPLACEMENT	KEY NUMBER	VARIABLES			ELECTRICAL CHARACTERISTIC VARIATIONS	FUTURE DESIGN VARIABLES	PACKAGING VARIATIONS	
	0	6	D					0	A	3				SUCTION VALVE & M.E. COVER ORIENTATION
VARIABLE DIGIT	1	2	3	4	5	6	7	8	9	10	11	12	13	14

1ST, 2ND, 3RD DIGITS
SIGNIFY 06D HERMETIC
RECIP. COMPRESSOR

4TH DIGIT UNLOADER VARIABLE				DESCRIPTION
LETTER	S	A	BOTH	
A	X			NO HOT GAS BY-PASS UNLOADERS
B	X			ELECTRIC UNLOADERS 1 STEP
C	X			2 STEP
D	X			PRESSURE UNLOADERS 1 STEP
E	X			2 STEP
F	X			SUCTION CUT-OFF 1 STEP
G	X			ELECTRIC UNLOADERS 2STEP
M			X	MED. TEMPERATURE, REPLACES ALL "A's" IN SERVICE
N			X	2 SHAVED HDS. - SPECIAL ORDER
R			X	REFRIGERATION
W		X		A/C - 2 PLUGGED HDS. REPLACES ALL C&E SERVICE SPEC. ORDERS
X		X		1 PLUGGED HEAD - REPLACES ALL B, C, D & E PROD. MODELS IN SERVICE
Y		X		REFR. - 2 PLUGGED HDS. SERVICE SPEC. ORDER
S			X	HI-EFF SERVICE MOD. w/I BLOCKED UNLD'R HD - REPLACES F, G, H & J
H	X			SUCTON CUT-OFF PRES- 1 STEP
J	X			SURE UNLOADERS! 2 STEP

5TH DIGIT VARIABLE	MOTOR SIZES		
	2 CYL	4 CYL	6 CYL
0		3 HP	
1	2 HP		5 HP
2			24 LBFT
3		5 HP	27 LBFT
4	3 1/2 HP		
5		5 1/2 HP	38 LBFT
6			
7		5 HP	20 LBFT
8	3 HP	20 LBFT	24 LBFT
9			

6TH & 7TH DIGITS CFM	CRANKCASE ASSEMBLY NO.	CYL BORE
07	6D20-249	1-15/16
08	6D23-249	2
09	6D23-249	2
13	6D48-249	2
16	6D48-249	2
18	6D48-249	2
20	6D48-249	2
24	6D68-259	2
28	6D75-249	2
37	6D75-249	2

8TH DIGIT	KEY NO. SIGNIFICANCE
0	PROD. MOD. W/T-BOX
1	PKG. CPRSR. & CONTROL BOX
2	OEM A/C CPRSR.
3	TYLER MODELS
4	TECUMSEH OEM MODELS
5	FUTURE USE
6	REMAN. SERVICE CPRSR.
7	NEWMAN SERVICE GPRSR.
6	SPECIAL ORDER ONLY
9	SERV. SPEC. OR SEE NOTE 1

13TH DIGIT	FUTURE DESIGN VARIABLES
0	ORIGINAL DESIGN A/C & REFRIG.
1	2ND GENERATION REFRIG, CPRSR. W/NEW VALVE PLATE
2	MED. RANGE A/C CPRSR. WITH REFRIG. CHARACTERISTICS
3	LOW CLEARANCE VOLUME
4	SUCTION CUT-OFF ELECTRIC UNLOADERS 1 STEP
5	OILLESS
6	
7	

14TH DIGIT	PACKAGING VARIATIONS
0	SERVICE UNIT SINGLE PACK - BASE UNIT UNPACKAGES
1	SINGLE PACK - DOMESTIC LESS SERVICE VALVE
2	MULTI-PACK - DOMESTIC
3	EXPORT - I UNIT
4	MULTI-PACK
5	PALLETIZED
6	GOVERNMENT PACK
7	SINGLE PACK - DOMESTIC WITH SERVICE VALVE
8	MATCHED COMPONENTS - CONSISTS OF SEPARATE EXPORT PACKAGE PIECES
9	DOMESTIC MULTI-PACK & MCMINNVILLE

10TH DIGIT	OVERLOAD & T'STAT. VARIABLE SEE NOTE 2			DESCRIPTION
	EXTL. OVLDS.	INTL. T'RAT.		
A	YES	YES		
B	YES	NO		
C	NO	YES		
D	NO	NO		
E	YES	YES		1ST OVERLOAD VARIATION
F	YES	NO		1ST OVERLOAD VARIATION
G	YES	YES		MANUAL RESET OVERLOADS
T	NO	YES		TECUMSEH SERVICE MODELS

11TH & 12TH DIGITS	ELECTRICAL CHARACTERISTICS VOLTS-PHASE-HERTZ	START
00		XL
01	575 - 3 - 60	XL
02	200 - 1 - 60	XL
03	230 - 1 - 60	XL
04	200 - 3 - 60	XL
05	230 - 3 - 60	XL
06	400/460 - 3 - 50/60	XL
07	230 - 1 - 50	XL
08	220 - 3 - 50	XL
09	SEE NOTE 3	XL
10	230 - 2 - 60	XL
11	480 - 3 - 60	XL
12	208/230 - 3 - 60	XL
13	380 - 3 - 60	XL
14	200 - 3 - 60	P/W
15	230 - 3 - 60	P/W
18	220 - 3 - 50	P/W
19	230/460 - 3 - 60	XL
21	575 - 3 - 60	XL
26	400/460 - 3 - 50/60	XL
31	575 - 3 - 60	XL
32	208/230 - 3 - 60	XL
36	400/460 - 3 - 50/60	XL
38	415 - 3 - 50	P/W
39	415 - 3 - 50	XL
33	208/230 - 1 - 60	XL
34	220 - 3 - 50	XL

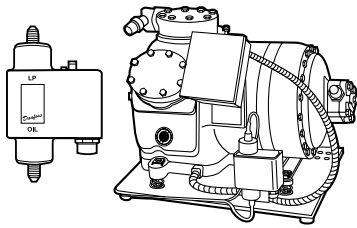
9TH DIGIT	SUCTION SERVICE VALVE VARIABLES			VALVE ORIENTATION
	LOC. OF VALVE	M.E.COV. DESC.	VALVE ORIENTATION	
A	MOTOR END	2 BOLT	30°	
B	MOTOR END	4 BOLT	30°	
C	MOTOR END	2 BOLT	90°	
D	MOTOR END	4 BOLT	90° OR 180°	
E	MOTOR END	2 BOLT	150°	
F	PUMP END	PLAIN	270°	
G	PUMP END	PLAIN	225°	

- NOTES:
- SPECIAL ORDER SERVICE COMPRESSORS FOR BRYANT MAY BE PROCESSED AS "9" NAMEPLATED "6" (8TH DIGIT).
 - SERVICE MODELS WITH "C" IN THE 10th DIGIT REPLACE ALL "A", "C" AND "E" ORIGINAL EQUIPMENT MODELS AND "D" SERVICE MODELS REPLACE "8" & "F" MODELS. TERMINAL BOXES AND OVERLOADS ARE TO BE RE-USED OR REPLACED IF DAMAGED.
 - "09" IN THE 11TH & 12TH DIGITS HAS BEEN USED IN THE PAST FOR 400-3-50 MOTORS AND IS NO LONGER USED, SO AS TO AVOID CONFUSION IN SERVICE THESE DIGITS ARE TO BE LEFT ON THIS CHART BUT ARE NOT TO BE RE-USED.

CARLYLE SEMI-HERMETIC COMPRESSORS

06D

AIR CONDITIONING DUTY COMPRESSOR APPLICATION DATA



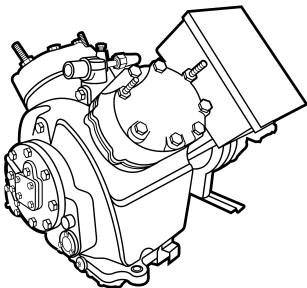
P59N

For mounting configuration, dimensions and weight refer to outline drawings on following pages.

MODEL NO.	NOMINAL HP	NO. OF CYL.	CFM @ 1750 RPM	SUCTION TEMP. RANGE (°F)	R-22	
					CAPACITY (000 BTUH)	
					AIR COOLED	WATER COOLED
					45° SST 130° SCT 0° SC	40° SST 105° SCT 0° SC
06DM808	3	2	8.0	-10 to 50	36.7	39.8
06D()313	5	4	13.1	-10 to 50	56.9	62.7
06D()818	6.5	4	18.3	-10 to 50	83.3	91.0
06D()724	6.5	6	23.9	-10 to 50	-	122.6
06D()824	7.5	6	23.9	-10 to 50	106.5	117.3
06D()328	10	6	28.0	-10 to 50	128.7	140.0
06D()337	10	6	37.1	-10 to 50	-	185.6
06D()537	15	6	37.1	-10 to 50	175.4	191.3

06E

COMPRESSOR APPLICATION DATA



P51

For mounting configuration, dimensions and weight refer to outline drawings on following pages..

MODEL NO.	NOMINAL HP	NO. OF CYL.	CFM @ 1750 RPM	SUCTION TEMP. RANGE (°F)	R-22	
					CAPACITY (000 BTUH)	
					AIR COOLED	WATER COOLED
					45° SST 130° SCT 0° SC	40° SST 105° SCT 0° SC
06E()150	15	4	50.0	-10 to 50	-	245.8
06E()250	20	4	50.0	-10 to 50	223.3	247.0
06E()265	25	6	65.0	-10 to 50	300.3	334.7
06E()266	25	4	66.0	-10 to 50	290.0	302.6
06E()175	25	6	75.0	-10 to 50	-	364.3
06E()275	30	6	75.0	-10 to 50	332.8	363.0
06E()199	35	6	99.0	-10 to 50	-	469.7
06E()299	40	6	99.0	-10 to 50	437.9	476.3

CFM = Cubic Feet Per Minute
 SST = Saturated Suction Temperature
 SCT = Saturated Condensing Temperature
 SC = Sub Cooling

Generally, for a compressor changeout in a Carrier/BDP unit the use of existing circuit breaker(s) is acceptable.

CARLYLE SEMI-HERMETIC COMPRESSORS

06D OUTLINE DRAWINGS

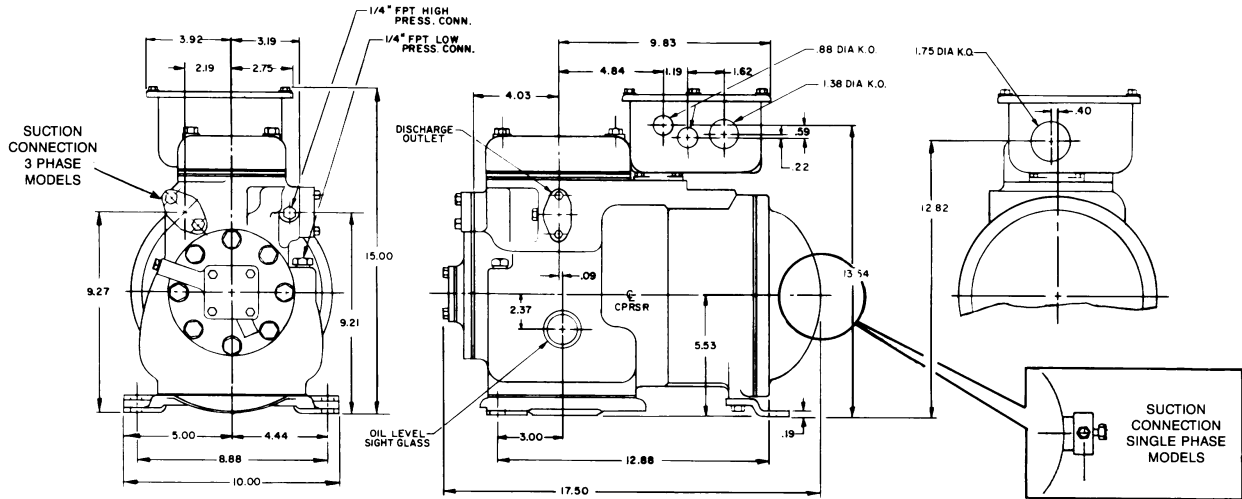
NOTE: COMPRESSORS SHOWN WITH OPTIONAL ACCESSORIES - CONTACT YOUR DISTRIBUTOR FOR DETAILS.

06D COMPRESSOR

	8 CFM	9 CFM
NO. OF CYLINDERS	2	2
BORE AND STROKE (in.)	2.0 x 1.25	2.0 x 1.366
DISPLACEMENT CFM AT 1750 RPM	7.95	8.69
OIL, CHARGE, PINTS CPP33-2	3.5	3.5
DRY WEIGHT LESS SERVICE VALVES	150 LBS	140 LBS

NOTES:

1. OIL PUMP IS AUTOMATICALLY REVERSIBLE FOR EITHER DIRECTION OF ROTATION.
2. CRANKCASE HEATERS (ACCESSORY) WHEN REQUIRED ARE STRAPPED TO BASE OF OIL RESERVOIR.



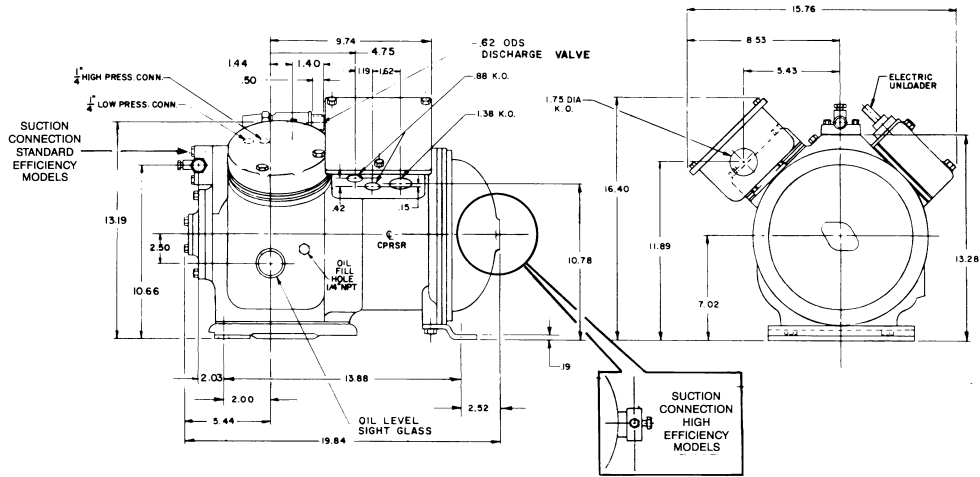
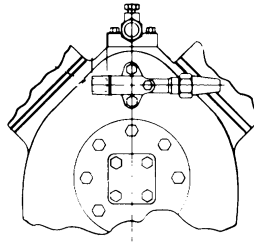
CARLYLE SEMI-HERMETIC COMPRESSORS

06D OUTLINE DRAWINGS

NOTE: COMPRESSORS SHOWN WITH OPTIONAL ACCESSORIES - CONTACT YOUR DISTRIBUTOR FOR DETAILS.

06D COMPRESSOR

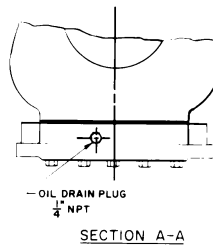
	13 CFM	16 CFM
NO. OF CYLINDERS	4	4
BORE AND STROKE (in.)	2.0 x 1.0	2.0 x 1.25
DISPLACEMENT CFM AT 1750 RPM	13.00	15.90
OIL CHARGE, PINTS CPP33-2	5.0	5.0
DRY WEIGHT LESS SERVICE VALVES	182 LBS	182 LBS



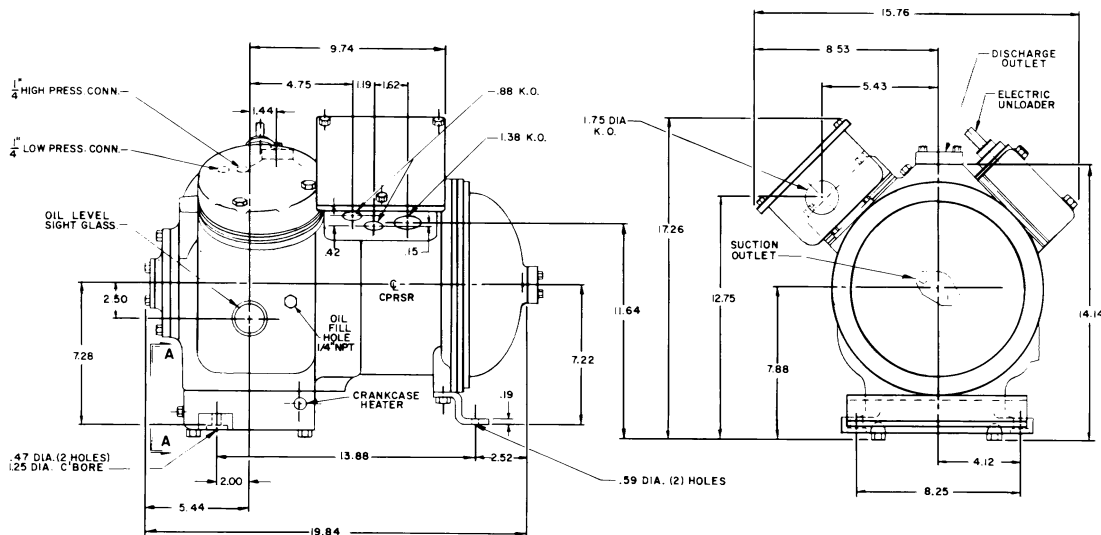
NOTE: SUCTION SERVICE VALVE MAY ALSO BE MOUNTED ON OIL PUMP END OF COMPRESSOR.

06D COMPRESSOR

	18 CFM	20 CFM
NO. OF CYLINDERS	4	4
BORE AND STROKE (in.)	2.0 x 1.435	2.0 x 1.559
DISPLACEMENT CFM AT 1750 RPM	18.26	19.59
OIL CHARGE, PINTS CPP33-2	7.0	7.0
DRY WEIGHT LESS SERVICE VALVES	221 LBS	221 LBS



NOTE: OIL PUMP IS AUTOMATICALLY REVERSIBLE FOR EITHER DIRECTION OF ROTATION.



Generally, for a compressor changeout in a Carrier/BDP unit the use of existing circuit breaker(s) is acceptable.

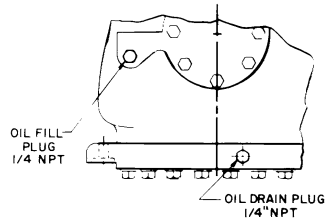
CARLYLE SEMI-HERMETIC COMPRESSORS

06D OUTLINE DRAWINGS

NOTE: COMPRESSORS SHOWN WITH OPTIONAL ACCESSORIES - CONTACT YOUR DISTRIBUTOR FOR DETAILS.

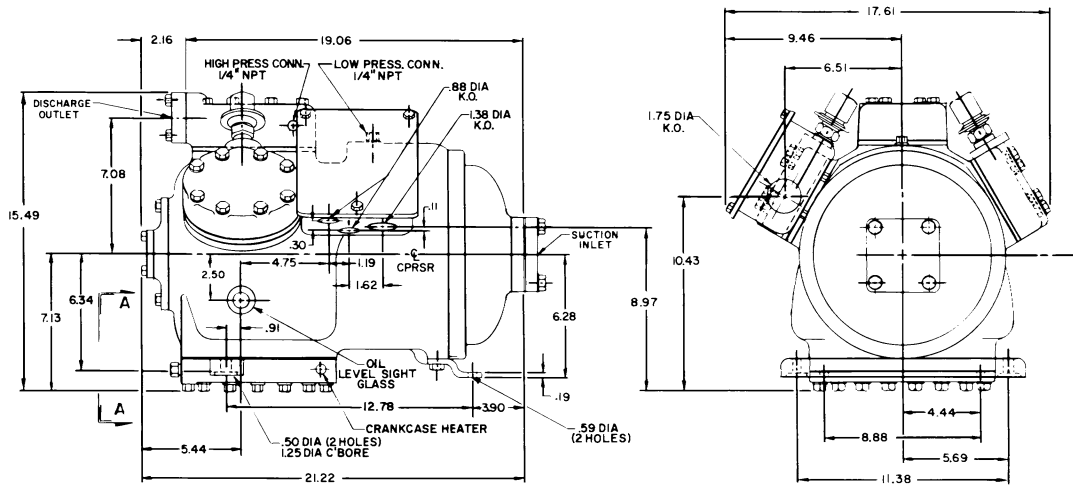
06D COMPRESSOR

	24 CFM
NO. OF CYLINDERS	6
BORE AND STROKE (in.)	2.0 x 1.25
DISPLACEMENT CFM AT 1750 RPM	23.66
OIL, CHARGE, PINTS CPP33-2	9.5
DRY WEIGHT LESS SERVICE VALVES	275 LBS



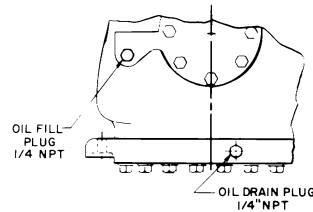
NOTE: OIL PUMP IS AUTOMATICALLY REVERSIBLE FOR EITHER DIRECTION OF ROTATION.

SECTION A-A



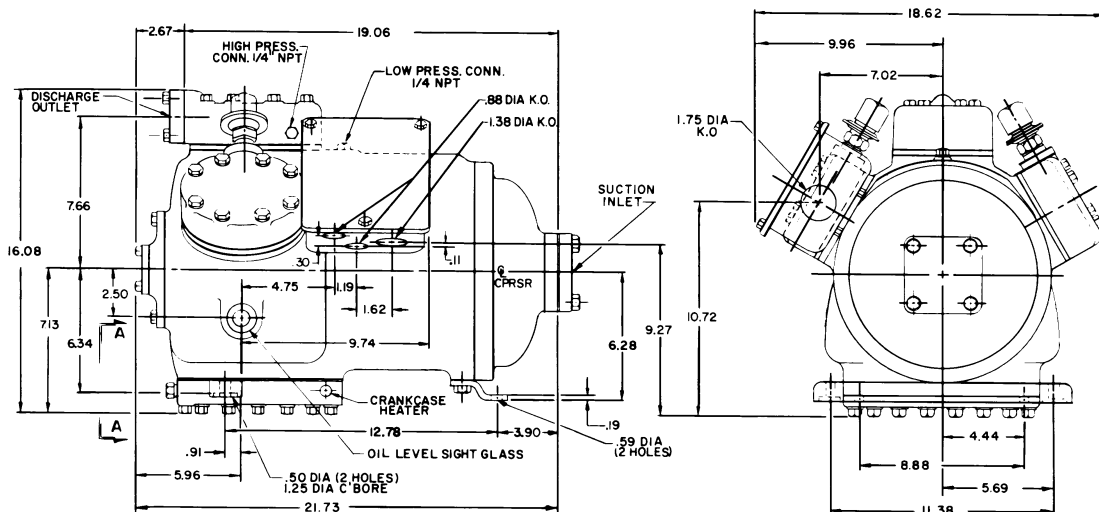
06D COMPRESSOR

	28 CFM	37 CFM
NO. OF CYLINDERS	6	6
BORE AND STROKE (in.)	2.0 x 1.469	2.0 x 1.983
DISPLACEMENT CFM AT 1750 RPM	28.04	37.00
OIL, CHARGE, PINTS CPP33-2	9.5	9.5
DRY WEIGHT LESS SERVICE VALVES	305 LBS	305 LBS



NOTE: OIL PUMP IS AUTOMATICALLY REVERSIBLE FOR EITHER DIRECTION OF ROTATION.

SECTION A-A



CARLYLE SEMI-HERMETIC COMPRESSORS

CARLYLE SEMI-HERMETIC COMPRESSORS

DATA AND ACCESSORY LISTING

To use this chart, first select the compressor suitable for the application. Consider capacity, refrigerant, voltage, wire size, space limitations, etc.

Next, use the compressor model number to enter the accessory tables and find the necessary accessories. These include Circuit Breakers, Service Valve Kits, Terminal Box Kits, Crankcase Heaters. You can also select any optional accessories needed for the installation.

06D COMPRESSOR DATA

STANDARD EFFICIENCY MODELS WITH ONE PLUGGED HOT GAS BYPASS UNLOADER HEAD

COMPRESSOR MODEL NO.	VOLT	HP	CFM	OIL CHG. PINTS	MAX. WATTS	MAX. RLA*	MTA	LRA
4 CYLINDER ... AIR CONDITIONING ... UNLOADING ... 60 HZ								
06DX8186-0600	460	6.5	18.3	7	10,800	17.6	22.0	62.0
06DX8186-1200	208/230	6.5	18.3	7	10,800	39.0	48.8	137.0
4 CYLINDER ... AIR CONDITIONING ... UNLOADING ... 50 HZ								
06DX8186-0600	400	6.5	15	7	9,000	17.6	22.0	62.0
6 CYLINDER ... AIR CONDITIONING ... UNLOADING ... 60 HZ								
06DX7246-0100	575	6.5	23.9	10	10,800	14.1	17.6	50.0
06DX7246-0600	460	6.5	23.9	10	10,800	17.6	22.0	62.0
06DX7246-1200	208/230	6.5	23.9	10	10,800	39.0	48.8	137.0
06DX8246-0100	575	7.5	23.9	10	14,100	17.8	22.2	62.0
06DX8246-0600	460	7.5	23.9	10	14,100	22.2	27.8	77.0
06DX8246-1200	208/230	7.5	23.9	10	14,100	49.3	61.5	170.0
06DX3286-0100	575	10	28	10	15,900	20.0	25.0	69.0
06DX3286-0600	460	10	28	10	15,900	24.8	31.0	86.0
06DX3286-1200	208/230	10	28	10	15,900	55.2	69.0	191.0
06DX3376-0100	575	10	37.1	10	15,900	20.0	25.0	69.0
06DX3376-0600	460	10	37.1	10	15,900	24.8	31.0	86.0
06DX3376-1200	208/230	10	37.1	10	15,900	55.2	69.0	191.0
6 CYLINDER ... AIR CONDITIONING ... UNLOADING ... 50 HZ								
06DX7246-0600	400	6.5	20	10	9,000	17.6	22.0	62.0
06DX8246-0600	400	7.5	20	10	11,700	22.2	27.8	77.0
06DX3286-0600	400	10	23.3	10	13,200	24.8	31.0	86.0
06DX3376-0600	400	10	31	10	13,200	24.8	31.0	86.0
06DX5376-0600	400	15	31	10	17,200	32.0	40.0	120.0
6 CYLINDER ... AIR CONDITIONING ... UNLOADING ... PART WIND START ... 60 HZ								
06DX3376-1400	200	10	37.1	10	15,900	27.6/27.6	34.5/34.5	115/92
06DX3376-1500	230	10	37.1	10	15,900	24.8/24.8	31.0/31.0	103/86
6 CYLINDER ... AIR CONDITIONING ... UNLOADING ... 60 HZ								
06DX5376-0100	575	15	37.1	10	20,700	25.6	32.0	96.0
06DX5376-0600	460	15	37.1	10	20,700	32.0	40.0	120.0
06DX5376-1200	208/230	15	37.1	10	20,700	71.2	89.0	266.0
6 CYLINDER ... AIR CONDITIONING ... UNLOADING ... PART WIND START ... 60 HZ								
06DX5376-1400	200	15	37.1	10	20,700	35.6/35.6	44.5/44.5	160/133
06DX5376-1500	230	15	37.1	10	20,700	32.0/32.0	40.0/40.0	144/120
6 CYLINDER ... AIR CONDITIONING ... UNLOADING ... PART WIND START ... 50 HZ								
06DR3286-1800	220	10	23.3	10	13,200	41.6	52.0	143
06DX3376-1800	220	10	31	10	13,200	41.6	52.0	143
06DX537-1800	220	15	31	10	17,200	46.9	67.0	200

*This is the maximum rated load amp rating for the compressor motor. The overcurrent protection (circuit breaker) in the unit may result in much lower RLA values.

Generally, for a compressor changeout in a Carrier/BDP unit the use of existing circuit breaker(s) is acceptable.

CARLYLE SEMI-HERMETIC COMPRESSORS

06D COMPRESSOR DATA - SINGLE PHASE

STANDARD EFFICIENCY - NO UNLOADING

COMPRESSOR MODEL NO.	VOLT	HP	CFM	OIL CHG. PINTS	MAX. WATTS	MAX. RLA	MTA	LRA
2 CYLINDER... AIR CONDITIONING & MEDIUM TEMPERATURE ... 60 HZ								
06DM8086-0300	230	3	8	3.5	2800	17.0	22.0	70.0
06DM1096-0300	230	2	8.7	3.5	2800	12.5	15.6	50.0
4 CYLINDER... AIR CONDITIONING & MEDIUM TEMPERATURE ... 60 HZ								
06DM3136-0300	230	5	13.1	5	6600	28.0	35.0	100.0
06DM3166-0300	230	5	15.9	5	6600	28.0	35.0	100.0
06DM3186-0300	230	5	18.3	7	6600	28.0	35.0	100.0
06DM5186-0300	230	5.5	18.3	7	7700	36.8	46.0	148.0
06DM7186-0300	230	5	18.3	7	6600	28.0	35.0	100.0

06D COMPRESSOR DATA - THREE PHASE

MEDIUM TEMPERATURE - NO UNLOADING

COMPRESSOR MODEL NO.	VOLT	HP	CFM	OIL CHG. PINTS	MAX. WATTS	MAX. RLA*	MTA	LRA
2 CYLINDER... AIR CONDITIONING & MEDIUM TEMPERATURE ... 60 HZ								
06DM8086-3100	575	3	8	3.5	4100	5.6	7.0	28.4
06DM8086-3200	208/230	3	8	3.5	4100	14.0	17.4	71.0
06DM8086-3600	460	3	8	3.5	4100	7.0	8.7	35.5
2 CYLINDER... AIR CONDITIONING & MEDIUM TEMPERATURE ... 50 HZ								
06DM8086-3600	400	3	6.7	3.5	3400	7.0	8.7	35.5
4 CYLINDER... AIR CONDITIONING & MEDIUM TEMPERATURE ... 60 HZ								
06DM3136-3100	575	5	13.1	5	6250	8.6	10.8	40.0
06DM3136-3200	208/230	5	13.1	5	6250	21.5	27.0	100.0
06DM3136-3600	460	5	13.1	5	6250	10.8	13.5	50.0
06DM3166-3100	575	5	15.9	5	6250	8.6	10.8	40.0
06DM3166-3200	208/230	5	15.9	5	6250	21.5	27.0	100.0
06DM3166-3600	460	5	15.9	5	6250	10.8	13.5	50.0

*This is the maximum rated load amp rating for the compressor motor. The overcurrent protection (circuit breaker) in the unit may result in much lower RLA values.

06D COMPRESSOR DATA - THREE PHASE

HIGH EFFICIENCY - NO UNLOADING

COMPRESSOR MODEL NO.	VOLT	HP	CFM	OIL CHG. PINTS	MAX. WATTS	MAX. RLA*	MTA	LRA
4 CYLINDER... AIR CONDITIONING & MEDIUM TEMPERATURE ... 50 HZ								
06DM3136-3600	400	5	11	5	5,200	10.8	13.5	50.0
06DM3166-3600	400	5	13	5	5,200	10.8	13.5	50.0
6 CYLINDER... AIR CONDITIONING & MEDIUM TEMPERATURE ... 60 HZ								
06DM3376-3100	575	10	37.1	10	16,500	17.9	25.0	91.0
06DM3376-3600	460	10	37.1	10	16,500	22.1	31.0	114.0
06DM3376-3200	208/230	10	37.1	10	16,500	44.3	62.0	228.0
6 CYLINDER... AIR CONDITIONING & MEDIUM TEMPERATURE ... 50 HZ								
06DM3376-3600	400	10	31	10	13,700	22.1	31.0	114.0

*This is the maximum rated load amp rating for the compressor motor. The overcurrent protection (circuit breaker) in the unit may result in much lower RLA values.

CARLYLE SEMI-HERMETIC COMPRESSORS

06D COMPRESSOR DATA - THREE PHASE

HIGH EFFICIENCY A/C DUTY - SUCTION CUTOFF UNLOADING

COMPRESSOR MODEL NO.	VOLT	HP	CFM	OIL CHG. PINTS	MAX. WATTS	MAX. RLA*	MTA	LRA
4 CYLINDER ... AIR CONDITIONING ... UNLOADING ... 60 HZ								
06DS3136-3100	575	5	13.1	5	6,250	8.6	10.8	40.0
06DS3136-3600	460	5	13.1	5	6,250	10.8	13.5	50.0
06DS3136-3200	208/230	5	13.1	5	6,250	21.5	27.0	100.0
06DS8166-3600	460	6.5	15.9	5	10,800	15.7	22.0	80.0
06DS8186-3100	575	6.5	18.3	7	10,800	12.6	17.6	64.0
06DS8186-3600	460	6.5	18.3	7	10,800	15.7	22.0	80.0
06DS8186-3200	208/230	6.5	18.3	7	10,800	31.5	44.0	160.0
4 CYLINDER ... AIR CONDITIONING ... UNLOADING ... 50 HZ								
06DS3136-3600	400	5	11	5	5,200	10.8	13.5	50.0
06DS8166-3600	400	6.5	13	5	9,000	15.7	22.0	80.0
06DS8186-3600	400	6.5	15	7	9,000	15.7	22.0	80.0
6 CYLINDER ... AIR CONDITIONING ... UNLOADING ... 60 HZ								
06DS8246-3100	575	7.5	239	10	12,800	15.9	22.0	79.0
06DS8246-3600	460	7.5	23.9	10	12,800	19.9	27.8	99.0
06DS8246-3200	208/230	7.5	23.9	10	12,800	39.7	55.5	198.0
06DS3286-3100	575	10	28	10	16,500	17.9	25.0	91.0
06DS3286-3600	460	10	28	10	16,500	22.1	31.0	114.0
06DS3286-3200	208/230	10	28	10	16,500	44.3	62.0	228.0
06DS5376-0100	575	15	37.1	10	20,700	25.6	32.0	96.0
06DS5376-0600	460	15	37.1	10	20,700	32.0	40.0	120.0
06DS5376-1200	208/230	15	37.1	10	20,700	71.2	89.0	266.0
6 CYLINDER ... AIR CONDITIONING ... UNLOADING ... 50 HZ								
06DS8246-3600	400	7.5	20	10	10,700	19.9	27.8	99.0
06DS3286-3600	400	10	23	10	13,700	22.1	31.0	114.0
06DS5376-0600	400	15	37.1	10	17,200	32.0	40.0	120.0

*This is the maximum rated load amp rating for the compressor motor. The overcurrent protection (circuit breaker) in the unit may result in much lower RLA values.

Generally, for a compressor changeout in a Carrier/BDP unit the use of existing circuit breaker(s) is acceptable.

CARLYLE SEMI-HERMETIC COMPRESSORS

REQUIRED CIRCUIT BREAKERS: 06D ... 60 HZ (AC DUTY)

COMPRESSOR MODEL NO.	CIRCUIT BREAKERS P/N
06DM8086-0300	HH83XB480
06DM1096-0300	HH83XB481
06DM8096-0300	HH32XB480
06DM3136-0300	HH83XB483
06DM3166-0300	HH83XB483
06DM3186-0300	HH83XB483
06DM5186-0300	HH83XB484
06DM7186-0300	HH83XB483
06DM8086-3200	HH83XB490
06DM8086-3600	HH83XB494
06DM3136-3100	HH83XB497
06DM3136-3200	HH83XB316
06DM3136-3600	HH83XB443
06DM3166-3100	HH83XB497
06DM3166-3200	HH83XB316
06DM3166-3600	HH83XB443
06DM8186-0100	HH83XB450
06DM8186-0600	HH83XB419
06DM8186-1200	HH83XB306
06DM8246-0100	HH83XB419
06DM8246-0600	HH83XB400
06DM8246-1200	HH83XB423
06DM3376-3100	HH83XB451
06DM3376-3600	HH83XB452

COMPRESSOR MODEL NO.	CIRCUIT BREAKERS P/N
06DM3376-3200	HH83XB305
06DM3376-1400	HH83XE630
06DM3376-1500	HH83XE604
06DM5376-0100	HH83XB440
06DM5376-0600	HH83XB422
06DM5376-1200	HH83XB311
06DM5376-1400	HH83XE633
06DM5376-1500	HH83XE643
06DS3136-3100	HH83XB497
06DS3136-3200	HH83XB316
06DS3136-3600	HH83XB443
06DS8166-3600	HH83XB416
06DS8186-3100	HH83XB450
06DS8186-3200	HH83XB368
06DS8186-3600	HH83XB416
06DS8246-3100	HH83XB416
06DS8246-3200	HH83XB364
06DS8246-3600	HH83XB415
06DS3286-3100	HH83XB451
06DS3286-3200	HH83XB305
06DS3286-3600	HH83XB452
06DS5376-0100	HH83XB420
06DS5376-0600	HH83XB401

COMPRESSOR MODEL NO.	CIRCUIT BREAKERS P/N
06DS5376-1200	HH83XB311
06DX8186-0100	HH83XB450
06DX8186-0600	HH83XB445
06DX8186-1200	HH83XB306
06DX7246-0100	HH83XB450
06DX7246-0600	HH83XB419
06DX7246-1200	HH83XB429
06DX8246-0100	HH83XB419
06DX8246-0600	HH83XB400
06DX8246-1200	HH83XB307
06DX3286-0100	HH83XB451
06DX3286-0600	HH83XB452
06DX3286-1200	HH83XB305
06DX3376-0100	HH83XB451
06DX3376-0600	HH83XB452
06DX3376-1200	HH83XB305
06DX3376-1400	HH83XE630
06DX3376-1500	HH83XE604
06DX5376-0100	HH83XB420
06DX5376-0600	HH83XB401
06DX5376-1200	HH83XB311
06DX5376-1400	HH83XE633
06DX5376-1500	HH83XE643

REQUIRED CIRCUIT BREAKERS: 06D ... 50 HZ

COMPRESSOR MODEL NO.	CIRCUIT BREAKERS P/N
06DM808-3600	HH83XB494
06DM313-3600	HH83XB443
06DM316-3600	HH83XB443
06DM818-0600	HH83XB419
06DM824-0600	HH83XB400
06DM337-3600	HH83XB452
06DM537-0600	HH83XB422
06DS3136-3600	HH83XB443

COMPRESSOR MODEL NO.	CIRCUIT BREAKERS P/N
06DS8166-3600	HH83XB416
06DS8186-3600	HH83XB416
06DS8246-3600	HH83XB415
06DS3286-3600	HH83XB452
06DS5376-3600	HH83XB401
06DX818-0600	HH83XB445
06DX724-0600	HH83XB419

COMPRESSOR MODEL NO.	CIRCUIT BREAKERS P/N
06DX824-0600	HH83XB400
06DX328-0600	HH83XB452
06DX328-1800	HH83XB365
06DX337-0600	HH83XB452
06DX337-1800	HH83XB365
06DX537-0600	HH83XB401
06DX537-1800	HH83XB314

CARLYLE SEMI-HERMETIC COMPRESSORS

REQUIRED ACCESSORIES - 06D

COMPRESSOR MODEL NO.	TERMINAL BOX KIT	SUCTION SERVICE VALVE KIT	ALTERNATE SUCTION SERVICE VALVE KIT	DISCHARGE SERVICE VALVE KIT	ALTERNATE DISCHARGE SERVICE VALVE KIT	OPTIONAL ACCESSORIES	
						SUSPENSION KIT	MOUNTING PLATE KIT
06DR109	06DA660075	06DA660061	-	06DA660060	06DA660059	06DA660058	06EA660096
013	06DA660078	-	-	↓	06DA660061	06DA660056	↓
316	↓	06DA660064	-	↓	↓	06DA660056	↓
718	↓	06DA660064	-	↓	↓	06DA660056	↓
820	↓	06DA660065	06EA660090	↓	↓	06DA660056	↓
820	↓	06DA660065	06EA660090	↓	↓	06DA660056	↓
724	↓	06DA660065	06EA660090	06DA660062	06DA660064	06DA660057	↓
228	↓	06EA660090	-	06DA660062	06DA660064	06DA660057	↓
337	↓	06EA660090	-	06DA660062	06DA660064	06DA660057	↓
06DM808	06DA660075	06DA660061	-	06DA660060	06DA660059	06DA660058	↓
809	↓	-	-	↓	06DA660061	06DA660058	↓
()313	06DA660078	06DA660061	-	↓	↓	06DA660056	↓
()316	06DA660078	06DA660064	-	↓	↓	06DA660056	↓
518	06DA660078	06DA660062	06DA660064	06DA660061	-	06DA660056	06EA660096
()818	↓	06DA660064	-	06DA660061	-	06DA660056	↓
06D()724	↓	06DA660063*	06DA660065*	06DA660062	06DA660064	06DA660057	↓
	↓	*	*	-	-	↓	↓
	↓	-	06EA660090*	-	-	↓	↓
	↓	-	*	-	-	↓	↓
()824	↓	06DA660064*	-	-	-	↓	↓
	↓	06DA660063*	06DA660065*	06DA660062	06DA660064	↓	↓
	↓	*	*	-	-	↓	↓
	↓	-	06EA660090*	-	-	↓	↓
	↓	-	*	-	-	↓	↓
()328	↓	06DA660064*	-	-	-	↓	↓
()337	↓	06EA660065	06EA660090	06DA660064	-	↓	↓
()537	↓	06DA660065	06EA660090	06DA660064	-	↓	↓
	↓	06DA660065	06EA660090	06DA660064	-	↓	↓

* -- 2 BOLT

** -- 4 BOLT

CARLYLE SEMI-HERMETIC COMPRESSORS

GUIDE TO 06E PART NUMBERING SYSTEM

	PRODUCT SERIES			DESIGN VARIABLES	USAGE	SIZE CFM CPRSR	HOM.H.P. CPRSR UNITS	ELECTRICAL CHARACTERISTICS	FUTURE DESIGN	MODEL AND PACKAGING
MODEL	0	6	E	A	1	5	0	3	4	0
DIGIT	1	2	3	4	5	6	7	8	9	10

1ST, 2ND, 3RD DIGITS
06E HERMETIC COMPRESSOR

▲ 4TH DIGIT
SUCTION
CUTOFF
UNLOADING

4TH DIGIT UHLADDER VARIABLE				DESCRIPTION	REVERSED HEAD 6 CYL. CPRSR WITH CONT BOX USED BY CAC FOR UNITS	SEE NOTE 2
LETTER	STANDARD	SERVICE	BOTH			
A	X			NO UNLOADERS		
B	X			ONE UNLOADER - ELECTRIC		
C	X			TWO UNLOADERS - ELECTRIC		
D	X			ONE UNLOADER - PRESSURE		
E	X			TWO UNLOADERS - PRESSURE		
F	X			NO UNLOADERS		
J	X			ONE UNLOADER - ELECTRIC		
K	X			TWO UNLOADERS - ELECTRIC		
L	X			ONE UNLOADER - PRESSURE		
N	X			TWO UNLOADERS - PRESSURE		
G	X			NO UNLOADERS - PRESSURE		
P	X			ONE UNLOADER - ELECTRIC		
U	X			TWO UNLOADERS - ELECTRIC		
V	X			ONE UNLOADER - PRESSURE		
W	X			TWO UNLOADERS - PRESSURE		
M	X			MEDIUM TEMP. - NO UNLOADERS		
R	X			REFRIGERATION - NO UNLOADERS		
T	X			SERVICE CPRSR. w/ (1) BLOCKED SUCTION CUT- OFF UNLOADER HEAD	REPLACES 2, 3,4, 5, 6, 7, 8 & 9	
X		X		SERVICE COMPRESSOR - AIR CONDITION.	REPLACES A, B,C, D, E, F, J, K, L & N	
Y		X		SVC. CPRSR. - REFRIG.	REPLACES R	

- 2
- 3
- 4
- 5
- 6
- 7
- 8
- 9

10TH DIGIT PACKAGING			
0	MODEL NO.	4	MULTI PACK EXP
1	SINGLE PACK LESS VALVE	5	PALLETIZED LESS VALVE
2	MULTI PACK DOM WITH VALVE	7	PALLETIZED WITH VALVE
3	SINGLE PACK WITH VALVE	9	MULTI PACK MC MINN

9TH DIGIT SERVICE DESIGN VARIABLE	
1	THERMOTECTOR PROTECTION OLD STYLE CRANKCASE
2	NEW MANUFACTURE SERVICE COMPRESSOR
3	FUTURE USE
4	REMANUFACTURED SERVICE COMPRESSOR LOW TEMP
5	OLD STYLE CRANKCASE ROBERTSHAW SENSORS & TAPPED CYL. HDS. MOTOR PROTECTION KIT REQ'D. FOR THERMOTECTOR APPLICATION
6	REMANUFACTURED SERVICE COMPRESSOR
7	REMANUFACTURED SERVICE COMPRESSOR MED. TEMP.

9TH DIGIT PROD. DESIGN VARIABLE	
0	OEM MODEL
1	ELECTRICAL REDESIGN
2	
3	FIRST REDESIGN LONG STROKE CRANKCASE
4	SECOND DESIGN ROBERTSHAW MOTOR PROTECTION
5	
6	CPRSR. MODEL LESS MOTOR PROTECTION
7	MEDIUM TEMP. ROBERTSHAW MOTOR PROTECTION
8	
9	CEMAK MODEL

5TH DIGIT USAGE			
0	LIGHT DUTY CPRSR. OR CPRSR. UNIT TONNAGE	5	
1	MEDIUM DUTY CPRSR.	7	
2	HEAVY DUTY CPRSR.	8	SPECIAL ORDER
3	OILLESS	9	
4			

6TH & 7TH DIGIT COMPRESSOR SIZE				
NO. CYL.	STD. PROD.	LONG STROKE STD. CLEARANCE	LONG STROKE HI CLEARANCE	SHORT STROKE
4	50 CFM	66 CFM	60 CFM	--
6	75 CFM	99 CFM	--	65 CFM

COMPRESSOR UNITS (CAC USAGE)		
NO CYL.	STD. PROD. CPRSR.	LONG STROKE CPRSR.
4	22 (NOM TONS)	--
6	33 (NOM TONS)	44 (NOM TONS)

8TH DIGIT ELECT	
1	575 - 3 - 60
2	200 - 1 - 60
3	208/230/460 - 3 - 60
4	200 - 3 - 60
5	230 - 3 - 60
6	400 - 3 - 50
	460 - 3 - 60
7	230 - 1 - 50
8	230 - 3 - 50
9	220/380 - 3 - 60
0	208/230 - 3 - 60
A	415 - 3 - 50

SYMBOLS:

▲ = SAMPLE PART NO. 06E2150360

NOTES:

- 220-3-60 UNIT DESIGNED FOR USE ON 198 to 242 V
380-3-60 342418 V
575-3-60 518660 V
460-3-60 414529 V
230-3-60 198264 V
230-3-50 198264 V
400-3-50 342457 V
200-3-60 180229 V

- RVS HD CPRSR -- ORIGINAL DESIGN NO. 4TH DIGIT A, B, C, D, CRF 9TH DIGIT REDESIGN NO. 4TH DIGIT F, J, K, L OR N 9TH DIGIT SAME AS STANDARD

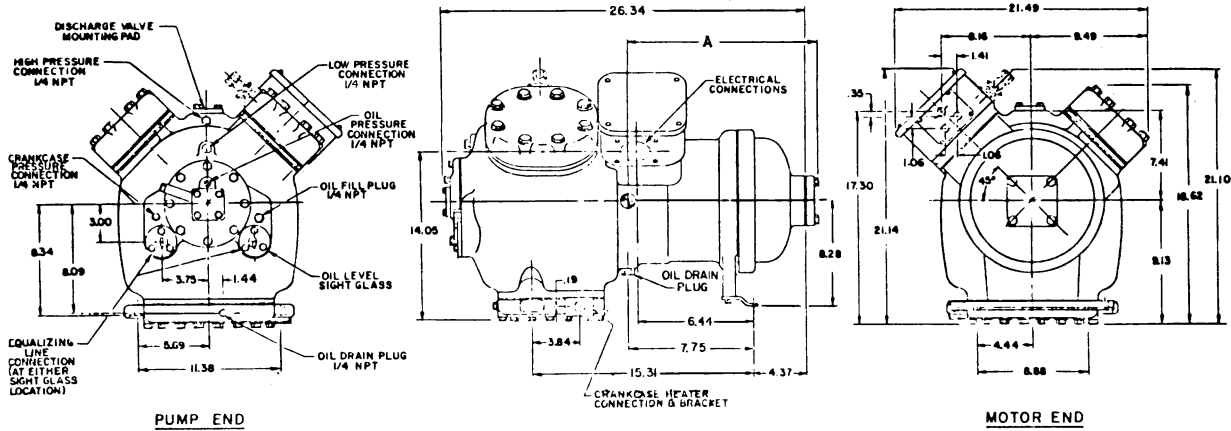
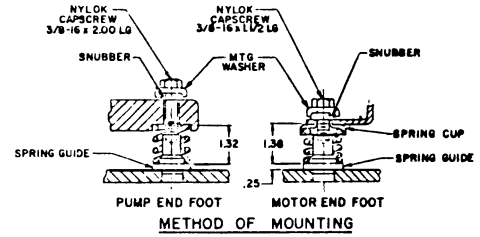
CARLYLE SEMI-HERMETIC COMPRESSORS

06E OUTLINE DRAWINGS

NOTE: COMPRESSORS SHOWN WITH OPTIONAL ACCESSORIES - CONTACT YOUR DISTRIBUTOR FOR DETAILS.

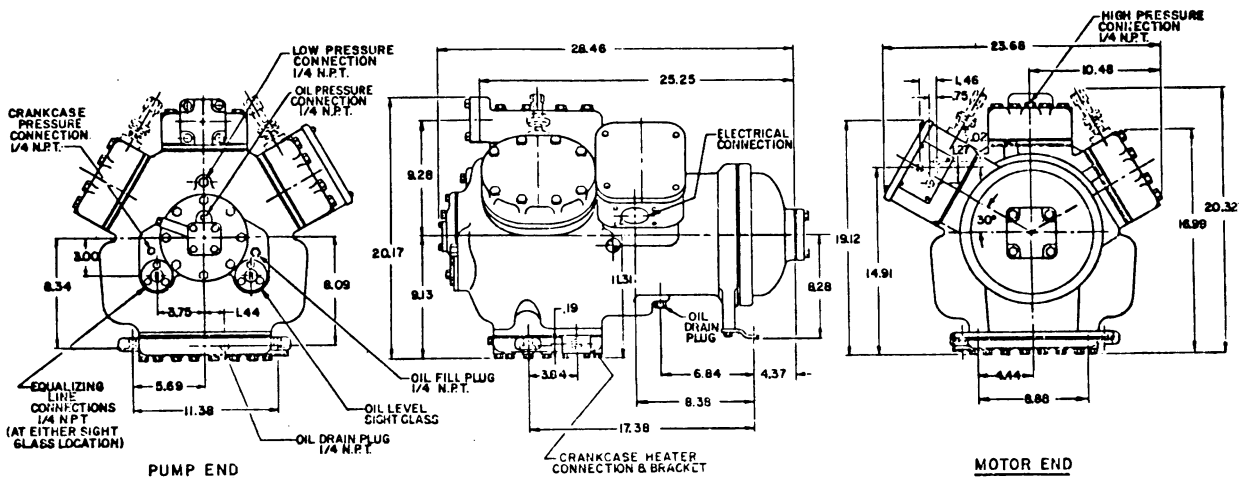
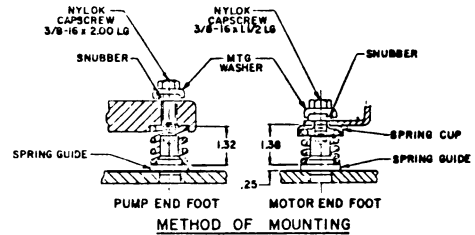
06E COMPRESSOR

	06E()150	06E()250	06E()266
MOTOR HORSEPOWER	15	20	25
NO. OF CYLINDERS	4	4	4
BORE AND STROKE (in.)	2.688 x 2.188	2.688 x 2.188	2.688 x 2.874
DISPLACEMENT CFM AT 1750 RPM	50	50	66
OIL, CHARGE, PINTS CPP33-2	14	14	14
NAMEPLATE TEST PRESSURE - HIGH	450 PSI	450 PSI	450 PSI
NAMEPLATE TEST PRESSURE - LOW	315 PSI	315 PSI	315 PSI
DRY WEIGHT LESS SERVICE VALVES	390 LBS	400 LBS	416 LBS
MAX. OPERATING CONDITIONS R-22	50/120° F	50/145° F	50/130° F



06E COMPRESSORS

	06E()265	06E()175	06E()275
MOTOR HORSEPOWER	25	25	30
NO. OF CYLINDERS	6	6	6
BORE AND STROKE (in.)	2.688 x 1.980	2.688 x 2.188	2.688 x 2.188
DISPLACEMENT CFM AT 1750 RPM	65	75	75
OIL, CHARGE, PINTS CPP33-2	19	19	19
NAMEPLATE TEST PRESSURE - HIGH	450 PSI	450 PSI	450 PSI
NAMEPLATE TEST PRESSURE - LOW	315 PSI	315 PSI	315 PSI
DRY WEIGHT LESS SERVICE VALVES	460 LBS	435 LBS	460 LBS
MAX. OPERATING CONDITIONS R-22	50/145° F	50/120° F	50/145° F

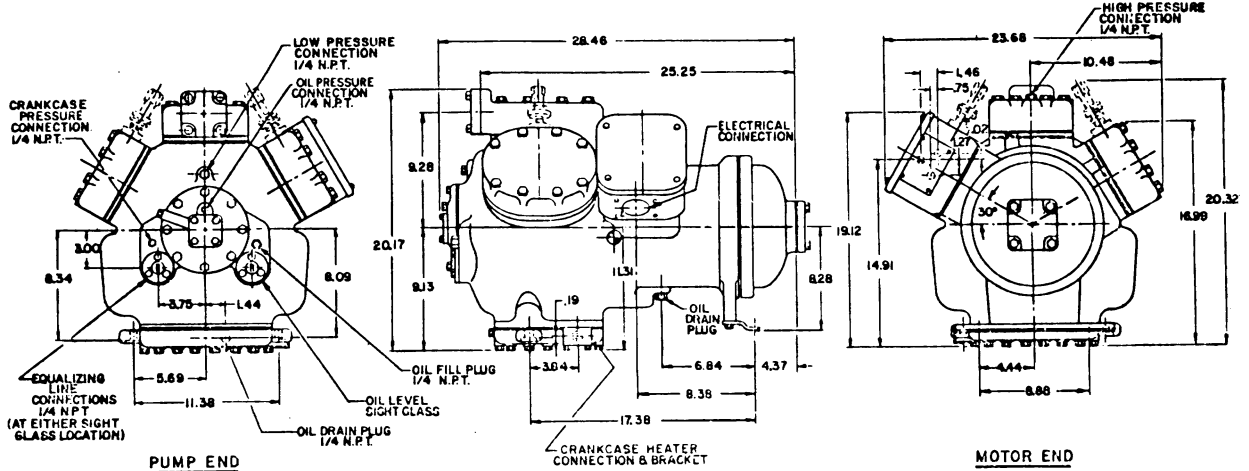
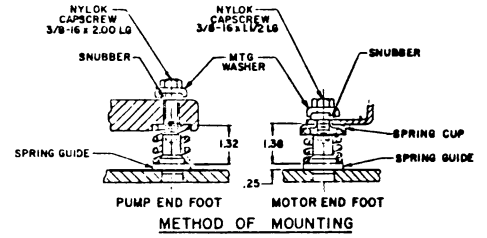


CARLYLE SEMI-HERMETIC COMPRESSORS

06E OUTLINE DRAWINGS

NOTE: COMPRESSORS SHOWN WITH OPTIONAL ACCESSORIES - CONTACT YOUR DISTRIBUTOR FOR DETAILS
06E COMPRESSORS

	06E()099	06E()199	06E()299
MOTOR HORSEPOWER	30	35	40
NO. OF CYLINDERS	6	6	6
BORE AND STROKE (in.)	2.688 x 2.874	2.688 x 2.874	2.688 x 2.874
DISPLACEMENT CFM AT 1750 RPM	65	99	99
OIL, CHARGE, PINTS CPP33-2	19	19	19
NAMEPLATE TEST PRESSURE - HIGH	450 PSI	450 PSI	450 PSI
NAMEPLATE TEST PRESSURE - LOW	315 PSI	315 PSI	315 PSI
DRY WEIGHT LESS SERVICE VALVES	495 LBS	495 LBS	519 LBS
MAX. OPERATING CONDITIONS R-22		50°/120° F	50°/145° F



CARLYLE SEMI-HERMETIC COMPRESSORS

06E COMPRESSOR DATA - THREE PHASE

STANDARD EFFICIENCY MODELS WITH ONE PLUGGED HOT GAS BYPASS UNLOADER HEAD

COMPRESSOR MODEL NO.	VOLT	HP	CFM	OIL CHG. PINTS	MAX. WATTS	MAX. RLA*	MTA	LRA
4 CYLINDER ... AIR CONDITIONING ... 60 HZ								
06EX150-160	575	15	50	14	22,000	31	38	98
06EX150-360	208-230/460	15	50	14	22,000	72/36	90/45	283/142
06EX150-660 **	460	15	50	14	22,000	36	45	142
06EX250-160	575	20	50	14	25,300	36	45	120
06EX250-360	208-230/460	20	50	14	25,300	87/44	108/54	345/173
06EX250-660 **	460	20	50	14	25,300	45	56	150
06EX266-160	575	25	66	14	33,600	46	57	164
06EX266-360	208-230/460	25	66	14	33,600	112/56	140/70	446/223
06EX266-660 **	460	25	66	14	33,600	57	71	205
4 CYLINDER ... AIR CONDITIONING ... 50 HZ								
06EX150-360	200/400	15	41.7	14	18,300	72/36	90/45	283/142
06EX150-660 **	400	15	41.7	14	18,300	36	45	142
06EX250-360	200/400	20	41.7	14	21,100	87/44	108/54	345/173
06EX250-660 **	400	20	41.7	14	21,100	45	56	150
06EX266-360	200/400	25	55	14	28,000	112/56	140/70	446/223
06EX266-660 **	400	25	55	14	28,000	57	71	205
6 CYLINDER ... AIR CONDITIONING ... 60 HZ								
06EX265-160	575	25	68	19	33,600	46	57	164
06EX265-360	208-230/460	25	68	19	33,600	112/56	140/70	446/223
06EX265-660 **	460	25	68	19	33,600	57	71	205
06EX175-160	575	25	75	19	33,600	46	57	164
06EX175-360	208-230/460	25	75	19	33,600	112/56	140/70	446/223
06EX175-660 **	460	25	75	19	33,600	57	71	205
06EX275-160	575	30	75	19	39,100	52	65	176
06EX275-360	208-230/460	30	75	19	39,100	135/68	168/84	506/253
06EX275-660 **	460	30	75	19	39,100	65	81	220
06EX299-160	575	40	99	19	54,000	77	97	240
06EX299-360	208-230/460	40	99	19	54,000	189/95	236/118	690/345
06EX299-660 **	460	40	99	19	54,000	97	121	300
6 CYLINDER ... AIR CONDITIONING ... 50 HZ								
06EX265-360	200/400	20	54	19	28,000	112/56	140/70	446/223
06EX265-660 **	400	20	54	19	28,000	57	71	205
06EX175-360	200/400	25	62.5	19	28,000	112/56	140/70	446/223
06EX175-660 **	400	25	62.5	19	28,000	57	71	205
06EX275-360	200/400	30	62.5	19	32,600	135/68	168/84	506/253
06EX275-660 **	400	30	62.5	19	32,600	65	81	220
06EX299-360	200/400	40	82.5	19	45,000	189/95	236/118	690/345
06EX299-660 **	400	40	82.5	19	45,000	97	121	300

*This is the maximum rated load amp rating for the compressor motor. The overcurrent protection (circuit breaker) in the unit may result in much lower RLA values.

**Order the discrete 400/460-3-50/60 volt compressor for part wind start applications only. When ordering, place the letters PW after the model number, (i.e., 06EX299660PW).

CARLYLE SEMI-HERMETIC COMPRESSORS

06E COMPRESSOR DATA - THREE PHASE

HIGH EFFICIENCY MODELS - ONE PLUGGED HEAD SUCTION CUTOFF UNLOADING

COMPRESSOR MODEL NO.	VOLT	HP	CFM	OIL CHG. PINTS	MAX. WATTS	MAX. RLA*	MTA	LRA
4 CYLINDER ... AIR CONDITIONING ... 60 HZ								
06ET150-1()0 †	575	15	50	14	22,000	31	38	98
06ET150-3()0 †	208-230/460	15	50	14	22,000	72/36	90/45	283/142
06ET150-6()0 **†	460	15	50	14	22,000	36	45	142
06ET250-1()0 †	575	20	50	14	25,300	36	45	120
06ET250-3()0 †	208-230/460	20	50	14	25,300	87/44	108/54	345/173
06ET250-6()0 **†	460	20	50	14	25,300	44	54	173
4 CYLINDER ... AIR CONDITIONING ... 50 HZ								
06ET150-320	200/400	15	41.7	14	18,300	72/36	90/45	283/142
06ET150-360	200/400	15	41.7	14	18,300	72/36	90/45	283/142
06ET150-620 **	400	15	41.7	14	18,300	36	45	142
06ET150-660 **	400	15	41.7	14	18,300	36	45	142
06ET250-320	200/400	20	41.7	14	21,100	87/44	108/54	345/173
06ET250-360	200/400	20	41.7	14	21,100	87/44	108/54	345/173
06ET250-620 **	400	20	41.7	14	21,100	44	54	173
06ET250-660 **	400	20	41.7	14	21,100	44	54	173
6 CYLINDER ... AIR CONDITIONING ... 60 HZ								
06ET265-1()0 †	575	25	65	19	33,600	46	57	164
06ET265-3()0 †	208-230/460	25	65	19	33,600	112/56	140/70	446/223
06ET265-6()0 **†	460	25	65	19	33,600	56	70	223
06ET175-1()0 †	575	25	75	19	33,600	46	57	164
06ET175-3()0 †	208-230/460	25	75	19	33,600	112/56	140/70	446/223
06ET175-6()0 **†	460	25	75	19	33,600	56	70	223
06ET275-1()0 †	575	30	75	19	39,100	52	65	176
06ET275-3()0 †	208-230/460	30	75	19	39,100	135/68	168/84	506/253
06ET275-6()0 **†	460	30	75	19	39,100	68	84	253
06ET299-1()0 †	575	40	99	19	54,000	78	97	240
06ET299-3()0 †	208-230/460	40	99	19	54,000	189/95	236/118	690/345
06ET299-6()0 **†	460	40	99	19	54,000	95	118	345
6 CYLINDER ... AIR CONDITIONING ... 50 HZ								
06ET265-320	200/400	25	54	19	28,000	112/56	140/70	446/223
06ET265-360	200/400	25	54	19	28,000	112/56	140/70	446/223
06ET265-620 **	400	25	54	19	28,000	56	70	223
06ET265-660 **	400	25	54	19	28,000	56	70	223
06ET175-320	200/400	25	62.5	19	28,000	112/56	140/70	446/223
06ET175-360	200/400	25	62.5	19	28,000	112/56	140/70	446/223
06ET175-620 **	400	25	62.5	19	28,000	56	70	223
06ET175-660 **	400	25	62.5	19	28,000	56	70	223
06ET275-320	200/400	30	62.5	19	32,600	135/68	168/84	506/253
06ET275-360	200/400	30	62.5	19	32,600	135/68	168/54	506/253
06ET275-620 **	400	30	62.5	19	32,600	68	84	253
06ET275-660 **	400	30	62.5	19	32,600	68	84	253
06ET299-320	200/400	40	82.5	19	45,000	189/95	236/118	690/345
06ET299-360	200/400	40	82.5	19	45,000	189/95	236/118	690/345
06ET299-620 **	400	40	82.5	19	45,000	95	118	345
06ET299-660 **	400	40	82.5	19	45,000	95	118	345

*This is the maximum rated load amp rating for the compressor motor. The overcurrent protection (circuit breaker) in the unit may result in much lower RLA values.

**Order the discrete 400/460-3-50/60 volt compressor for part wind start applications only. When ordering, place the letters PW after the model number, (i.e., 06EX299660PW).

†Digit indicated by () may be a 6 or a 2.

CARLYLE SEMI-HERMETIC COMPRESSORS

REQUIRED CIRCUIT BREAKERS: 06E ... 60 HZ (AC DUTY)

COMPRESSOR MODEL NO.	CIRCUIT BREAKERS P/N
06EX150-160	HH83XB447
06EX150-360	HH83XE612†
	HH83XB360††
	HH83XB446†††
06EX150-660	HH83XB446
06EX250-160	HH83XB446
06EX250-360	HH83XE622†
	HH83XB336††
	HH83XB437†††
06EX250-660	HH83XE626
06EX266-160	HH83XB436
06EX266-360	HH83XE664†
	HH83XC409††
	HH83XB455†††
06EX266-660	HH83XE630
06EX265-160	HH83XB436
06EX265-360	HH83XE627†
	HH83XC409††
	HH83XB417†††
06EX265-660	HH83XE630
06EX175-160	HH83XB436

COMPRESSOR MODEL NO.	CIRCUIT BREAKERS P/N
06EX175-360	HH83XE664†
	HH83XC409††
	HH83XB455†††
06EX175-660	HH83XE630
06EX275-160	HH83XB424
06EX275-360	HH83XE615†
	HH83XC439††
	HH83XB471†††
06EX275-660	HH83XE642
06EX299-160	HH83XB425
06EX299-360	HH83XE660†
	HH83XC437††
	HH83XE662†††
06EX299-660	HH83XE662
06ET150-120	HH83XB447
06ET150-360	HH83XE612†
	HH83XB360††
	HH83XB446†††
06ET150-620,-660	HH83XB446
06ET175-120,-160	HH83XB436
06ET175-320,-360	HH83XE664†
	HH83XC409††
	HH83XB455†††

COMPRESSOR MODEL NO.	CIRCUIT BREAKERS P/N
06ET175-620,-660	HH83XE625
06ET250-120,-160	HH83XB446
06ET250-320,-360	HH83XE622†
	HH83XB336††
	HH83XB437†††
06ET250-620,-660	HH83XE626
06ET265-120,-160	HH83XB433
06ET265-320,-360	HH83XE664†
	HH83XC409††
	HH83XB455†††
06ET265-620,-660	HH83XE625
06ET275-120,-160	HH83XB424
06ET275-320,-360	HH83XE615†
	HH83XC439††
	HH83XB471†††
06ET275-620,-660	HH83XE643
06ET299-120,-160	HH83XB425
06ET299-320,-360	HH83XE660†
	HH83XC437††
	HH83XE662†††
06ET299-620,-660	HH83XE662

REQUIRED CIRCUIT BREAKERS: 06E ... 50 HZ

COMPRESSOR MODEL NO.	CIRCUIT BREAKERS P/N
06EX150-360	HH83XE612†
	HH83XB360††
	HH83XB446†††
06EX250-360	HH83XE622†
	HH83XB336††
	HH83XB437†††
06EX250-660	HH83XE626
06EX266-360	HH83XE664†
	HH83XC409††
	HH83XB455†††
06EX266-660	HH83XE630
06EX265-360	HH83XE627†
	HH83XC409††
	HH83XB417†††
06EX265-660	HH83XE630
06EX175-360	HH83XE664†
	HH83XC409††
	HH83XB455†††
06EX175-660	HH83XE630

COMPRESSOR MODEL NO.	CIRCUIT BREAKERS P/N
06EX275-360	HH83XE615†
	HH83XC439††
	HH83XB471†††
06EX275-660	HH83XE642
06EX299-360	HH83XE660†
	HH83XC437††
	HH83XE662†††
06EX299-660	HH83XE662
06ET150-320	HH83XE612†
	HH83XB360††
	HH83XB446†††
06ET250-320	HH83XE622†
	HH83XB336††
	HH83XB437†††
06ET250-620	HH83XE626
06ET250-660	HH83XE664†
06ET265-320	HH83XE664†
	HH83XC409††
	HH83XB455†††
06ET265-660	HH83XE630

COMPRESSOR MODEL NO.	CIRCUIT BREAKERS P/N
06ET265-620	HH83XE625
06ET265-660	HH83XE664†
06ET175-320	HH83XC409††
	HH83XB455†††
	HH83XE625
06ET175-620	HH83XE615†
06ET275-320	HH83XC439††
	HH83XB471†††
	HH83XE643
06ET275-620	HH83XE660†
06ET299-320	HH83XC437††
	HH83XE662†††
	HH83XE662
06ET299-620	HH83XE662
06ET299-660	HH83XE662

NOTE: Circuit breakers listed for Discrete 460V Compressors are sized for part wind start.

†This circuit breaker is used when Multi-Volt Compressor is connected for 208/230V PWS operation.

††This circuit breaker is used when Multi-Volt Compressor is connected for 208/230V XL operation.

†††This circuit breaker is used when Multi-Volt Compressor is connected for 460V XL operation.

Accessory Screw Package for Circuit Breakers (Required) - P/N 06EA660102 (not used with HH83XA4_- Series Breakers).

Generally, for a compressor changeout in a Carrier/BDP unit the use of existing circuit breaker(s) is acceptable.

CARLYLE SEMI-HERMETIC COMPRESSORS

REQUIRED ACCESSORIES - 06E

COMPRESSOR MODEL NO.	TERMINAL BOX KIT	SUCTION SERVICE VALVE KIT	ALTERNATE SUCTION SERVICE VALVE KIT	DISCHARGE SERVICE VALVE KIT	ALTERNATE DISCHARGE SERVICE VALVE KIT	OPTIONAL ACCESSORIES	
						SUSPENSION KIT	MOUNTING PLATE KIT
06ET150	06EA660095	06EA660090	-	06DA660064	-	06EA660089	06EA660096
250			-	06DA660064	-		
265			-	06DA660065	06EA660090		
175		06EA660091	-	06DA660065	06EA660090		
275			-	06DA660065	06EA660090		
199			-	06EA660090	-		
299			-	06EA660090	-		
06EX150	06EA660095	06EA660090	-	06DA660064	-	06EA660089	06EA660096
250			-	06DA660064	-		
166			-	06DA660064	-		
266			-	06DA660064	-		
265			-	06DA660065	06EA660090		
175		06EA660091	-	06DA660065	06EA660090		
275			-	06DA660065	06DA660090		
199			-	06EA660090	-		
299			-	06EA660090	-		
06EY150		06EA660095	06EA660091	-	06DA660064		
166	-			06DA660064	-		
175	-			06DA660065	06EA660090		
099	-			06DA660065	06EA660090		
06EZ150	-			06DA660064	-		
266	-	06DA660064	-				
175	-	06DA660065	06EA660090				
199	-	06DA660065	06EA660090				

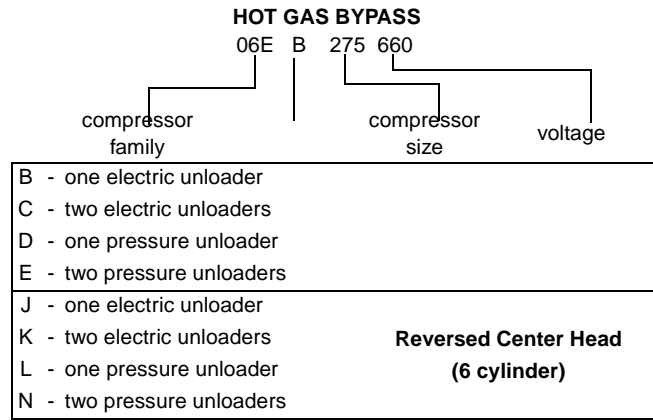
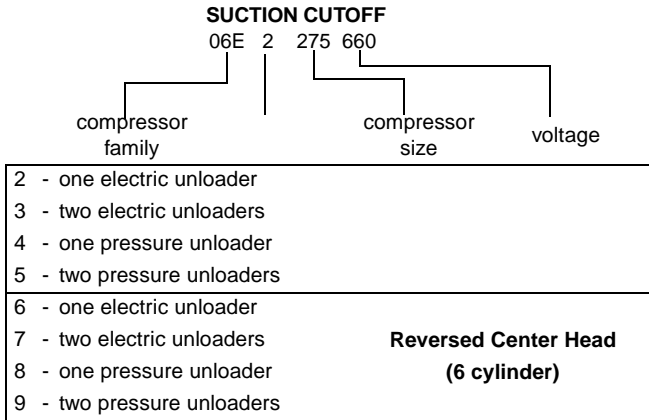
CARLYLE SEMI-HERMETIC COMPRESSORS/ACCESSORIES

SUCTION CUTOFF UNLOADING VS. HOT GAS BYPASS UNLOADING

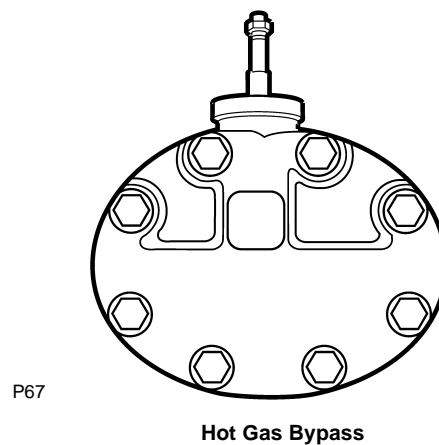
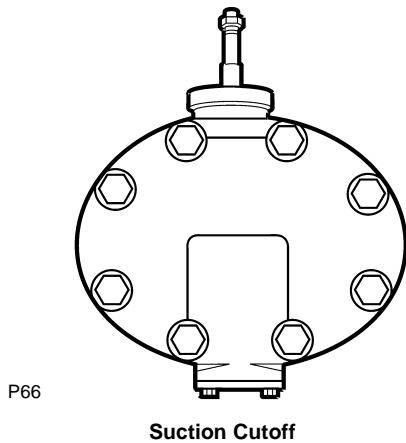
Since 1981 many of the Commercial Products Carrier produced with 06E compressors utilized "Suction Cutoff Unloading" in place of Hot Gas Bypass Unloading.

It is easy to identify a suction cutoff unloading compressor from a hot gas bypass unloading compressor. This can be done in one of two ways:

#1) The Finished Goods (new) compressor model number is different than the hot gas bypass model number.



#2) The unloading heads themselves physically look different.



The parts used in Hot Gas Bypass are different from those used in Suction Cutoff Unloading. These differences are:

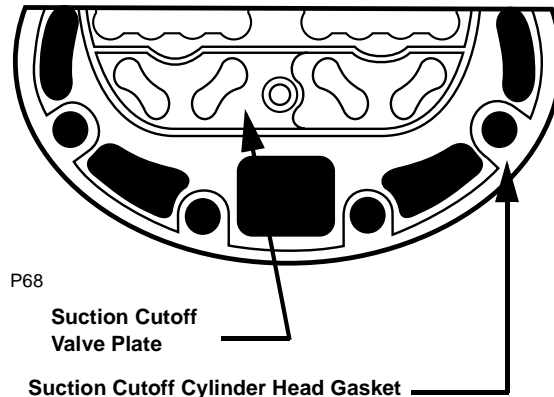
	PART NUMBERS	
	HOT GAS BYPASS	SUCTION CUTOFF
Valve Plate Package	06EA660105	06EA660137
Cylinder Head Gasket	06EA503314	06EA503334
Cylinder Head	-	06EA503524

The valve plate gasket for both Hot Gas Bypass and Suction Cutoff is 06EA504884.

Both hot gas bypass and suction cutoff use the same Control Valve Packages:

Pressure Control Valve P/N	06EA660100
Electric Control Valve P/N	06EA660135

These control valves are similar to those you used in the past except that the bypass piston is now separate from the valve and the pressure control valve has had internal modifications that allow it to operate on suction cutoff applications.



CARLYLE SEMI-HERMETIC COMPRESSORS/ACCESSORIES

06D SUCTION CUTOFF UNLOADING KITS

ELECTRIC CAPACITY CONTROL

MODIFICATION PACKAGE PART NO.: 06DA660089

The capacity control valve in this package is actuated by an electric solenoid. The solenoid is either energized or de-energized by the action of an external controller. The solenoid coil is not supplied with this package.

This package can be used to (1) convert an 06D compressor with hot gas bypass unloading to electrically operated suction cutoff unloading, (2) add unloading or (3) add a second bank of unloading to an 06D compressor.

The kit consist of the following:

- Cylinder Head Assembly (incl. capacity control valve)
- Valve Plate Gasket
- Cylinder Head Gasket
- Cylinder Head Bolts
- Instructions

Solenoid Coils for electric unloader valve.

PART NO.	VOLTAGE
EF19ZE024	24
EF19ZE120	120
EF19ZE240	208-240

PRESSURE CAPACITY CONTROL

MODIFICATION PACKAGE PART NO.: 06DA660090

NOT RECOMMENDED FOR REFRIGERATION APPLICATIONS

The capacity control valve in this package is controlled by suction pressure and actuated by discharge pressure.

This package can be used to (1) convert an 06D compressor with hot gas bypass unloading to suction cutoff unloading, (2) add unloading, or (3) add a second bank of unloading to an 06D compressor. The kit consists of the following:

- Cylinder Head Assembly (incl. capacity control valve)
- Valve Plate Gasket
- Cylinder Head Gasket
- Cylinder Head Bolts
- Instructions

SUCTION CUTOFF UNLOADING

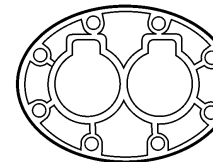
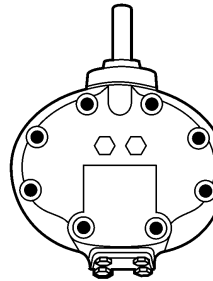
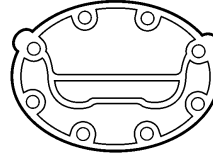
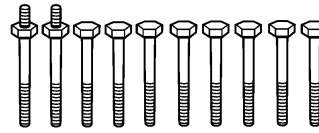
REPAIR KIT PART NO.:

06DA660111

This kit contains the parts used internally for the suction cutoff unloading head. It is used for both electric and pressure operated suction cutoff unloading applications. The kit **does not** contain the capacity control valve. The kit contains the following:

- Piston and Ring
- Valve Body
- Spring
- Capacity Control Valve Gasket
- Cover Gasket
- Strainer
- Instructions

Suction cutoff unloading is the "state of the art" unloading method for the 06E/06D compressors. There are substantial energy savings and improved compressor reliability when a hot gas bypass unloading system is replaced with suction cutoff unloading.

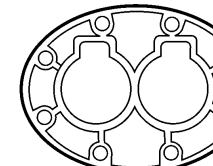
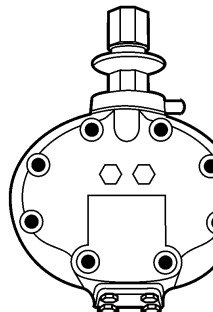
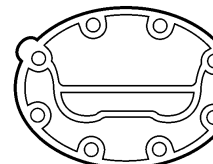
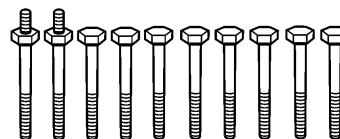


P64

06DA660089

ELECTRICALLY OPERATED

P/N: 06DA660089



P65

06DA660090

PRESSURE OPERATED

P/N: 06DA660090

(Not recommended for refrigeration application.)

CARLYLE SEMI-HERMETIC COMPRESSORS/ACCESSORIES

06E SUCTION CUTOFF UNLOADING KIT

ELECTRIC CAPACITY CONTROL MODIFICATION PACKAGE PART NO.: 06EA660138

The capacity control valve in this package is actuated by an electric solenoid. The solenoid is either energized or de-energized by the action of an external controller. The solenoid coil is not supplied with this package.

This package can be used to (1) convert an 06E compressor with hot gas bypass unloading to electrically operated suction cutoff unloading, (2) add unloading, or (3) add a second bank of unloading to an 06E compressor.

The kit contains the following:

Cylinder Head Assembly (incl. capacity control valve)

Valve Plate Gaskets (AC & Ref.)

Suction Valves

Cylinder Head Gasket

Capscrews

Washers

Instructions

Solenoid coils for electric unloader valve:

PART NO	VOLTAGE
EF19ZE024	24
EF19ZE120	120
EF19ZE240	208-240

PRESSURE CAPACITY CONTROL MODIFICATION PACKAGE PART NO.: 06EA660139

NOT RECOMMENDED FOR REFRIGERATION APPLICATIONS

The capacity control valve in this package is controlled by suction pressure and actuated by discharge pressure.

This package can be used to (1) convert an 06E compressor with hot gas bypass unloading to pressure operated suction cutoff unloading, (2) add unloading, or (3) add a second bank of unloading to an 06E compressor.

The kit contains the following:

Cylinder Head Assembly (incl. capacity control valve)

Valve Plate Gaskets (AC & Ref.)

Suction Valves

Cylinder Head Gasket

Capscrews

Washers

Wrench

Instructions

SUCTION CUTOFF UNLOADING REPAIR KIT PART NO.: 06EA660079

This kit contains the parts used internally for the suction cutoff unloading head. It is used for both electric and pressure operated suction cutoff unloading applications.

The kit **does not** contain the capacity control valve. The kit contains the following:

Piston and Ring

Valve Body

Spring

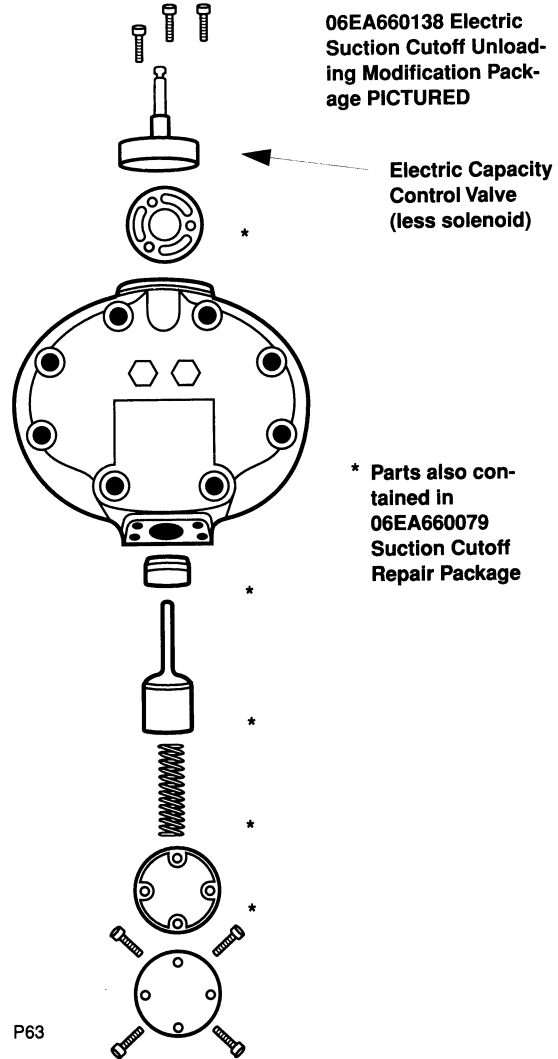
Capacity Control Valve Gasket

Cover Gasket

Strainer

Instructions

Suction cutoff unloading is the "state of the art" unloading method for the 06E/06D compressors. There are substantial energy savings and improved compressor reliability when a hot gas bypass unloading system is replaced with suction cutoff unloading.



CONTROL VALVE KITS

These kits contain the capacity control valve. The 06D and 06E compressors use the same capacity control valve. (The piston assembly is used with hot gas bypass unloading only.)

06EA660100 Pressure operated kit contains the following:

Pressure Operated Capacity Control Valve
Capacity Control Valve Gasket
Piston Assembly (for HGBP)
Wrench
Instructions

06EA660135 Electrically operated kit contains the following:

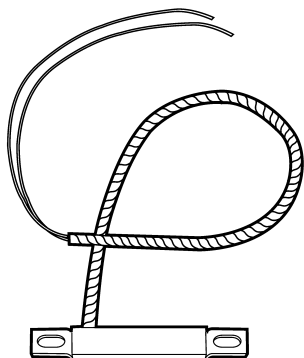
Electrically Operated Capacity Control Valve (Select appropriate solenoid coil: 24, 120, or 208-240V)
Capacity Control Valve Gasket
Piston Assembly (for HGBP)
Instructions

CARLYLE SEMI-HERMETIC COMPRESSORS/ACCESSORIES

CRANKCASE HEATERS

BAR/STRIP STYLE

06D, 2 CYL. AND 4 CYL. 8, 9, 13, 16 CFM MODELS



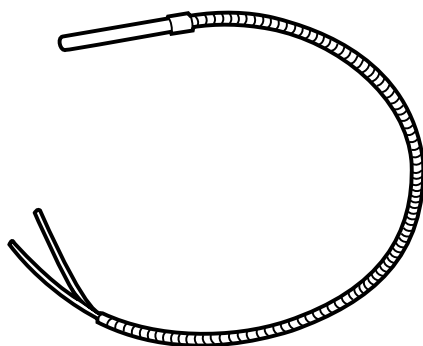
P73

WATTS	VOLTS	LEAD LENGTH (in.)	CONDUIT LENGTH (in.)	P/N
50	115	39	24	06DA660091
50	230	39	24	06DA660092

Dimensions: 7 1/2" Long, 1" Wide, 1/2" Thick

CRANKCASE HEATERS

06D, 06E, 06CC, 06CY



P74

- NEW STRAIGHT TUBE HEATER DESIGN
- KIT CONTAINS CRANKCASE HEATER, RETAINER CLIP AND ANTI-SHORT BUSHING, HEAT CONDUCTING GREASE (P/N: 38AQ680001)

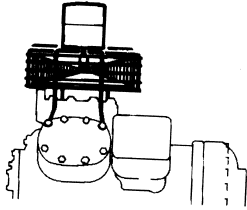
CRANKCASE HEATER PACKAGE	HEATER NUMBER	VOLTS	WATTS	CONDUIT LENGTH (in.)	WIRE LENGTH (in.)
06EA660165	HT36DM132	115	180	19"	24"
06EA660167	HT36DM134	115	180	52"	73"
06EA660166	HT36DM432	230	180	19"	24"
06EA660168	HT36DM434	230	180	52"	73"
06DA660076	HT36DL480	480	125	NONE	24"
06EA660107	HT36FL379	120	125	52"	73"
06EA660108	HT36FL479	240	125	52"	73"

CARLYLE SEMI-HERMETIC COMPRESSORS/ACCESSORIES

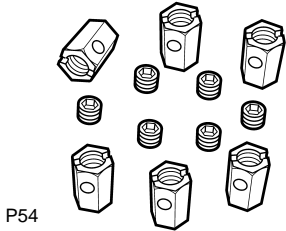
OPTIONAL ACCESSORIES - 06D AND 06E

CYLINDER HEAD COOLING FAN PACKAGE

	P/N	
06DR	06DR660014	208/230-1-60/1550 RPM
06EY	06ER660011	208/230-1-60/1550 RPM



06D TERMINAL LUG PACKAGE (6 TERMINAL LUGS AND SET SCREWS PER PKG.)



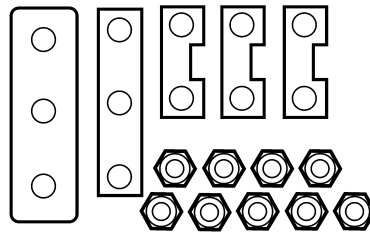
P54

P/N: 06DA660095

Terminal Lug Socket Tool

P/N: P920-0009

06E ACCESSORY ACROSS-THE-LINE JUMPER BAR KIT WITH JAM NUTS



P56

P/N: 06EA660141

06D Replacement Terminal Plate Kit

P/N: 06DA660-134

Replacement Gasket Only

P/N: 6 D 40 1061

06E TERMINAL LUGS



P55

P/N: HY85TB004, -008

NOTE: For some 200/230 volt **across the line** installations, the connection of 3 power wires to the compressor may not be possible because the wire diameter may be too large to fit the below listed lugs. In these instances we recommend that 6 motor leads and 6 terminal lugs be used to connect to the compressor terminal plate. The use of 6 leads (instead of 3) allows for a wire size reduction. Consult the National Electric Code or your local electric code for the appropriate wire sizing information.

FITS WIRE SIZE

#8 to #4

#4 to #1

P/N

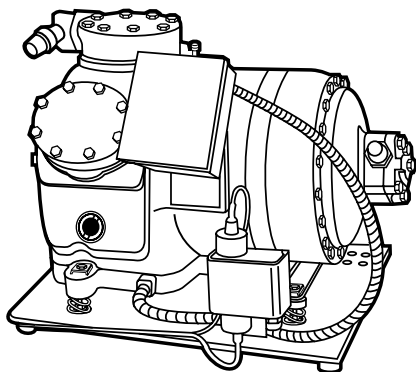
HY85TB008 *

HY85TB004

* 6 per package

CARLYLE SEMI-HERMETIC COMPRESSORS/ACCESSORIES

06D TERMINAL BOX KITS

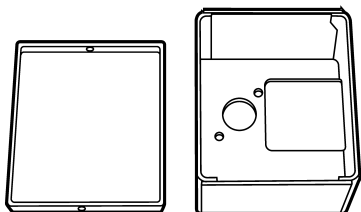


P69N

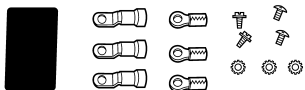
This kit consists of the terminal box and cover plus all screws, washers, and terminals.

P/N: 06DA660075

NOTE: Separate terminal lug package is available. Part No. 06DA660095 (contains 6 terminal lugs and set screws per pkg.)

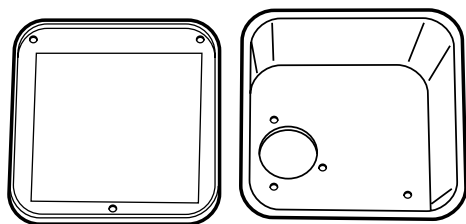


P70

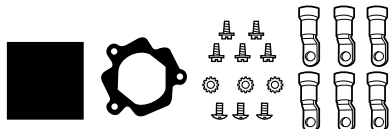


06DA660075 can be used in place of 06DA660078 Terminal Box and Cover Package if overloads are to be used with the compressor. However, it may be necessary to field fabricate a mounting box spacer to allow the 06DA660075 box to mount on the compressor body without interfering with the Compressor Terminal Insulator.

The 06DA660078 Terminal Box and Cover Package mounts directly to the Terminal Plate.

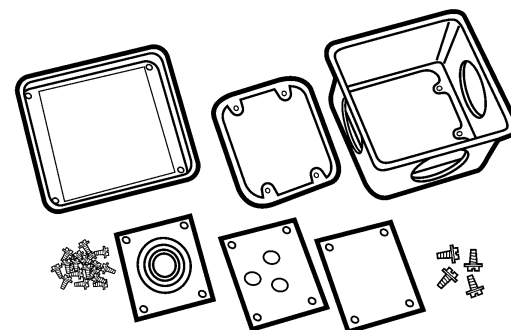
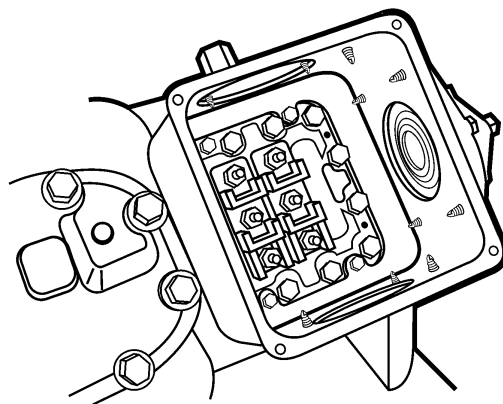


P71



P/N: 06DA660078

06E TERMINAL BOX KITS



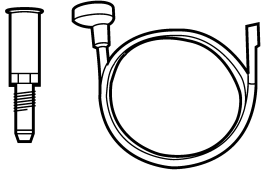
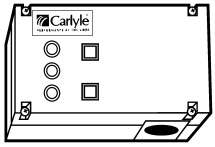
P72

This kit consists of the terminal box, cover, gasket and 3 cover plates (one blank, one with 3 knockouts, one with concentric knockouts). Screws are included.

P/N: 06EA660095

CARLYLE SEMI-HERMETIC COMPRESSORS/ACCESSORIES

06D, 06E ELECTRONIC LUBE OIL CONTROL



P57

- Solid State
- LED'S continuously display status of the compressor lubrication system.
- When control is connected to 06E bearing head or 6D68-952A (new 06D bearing head) external tubing is eliminated.
- Timing is not cumulative as in controls using a thermal timing circuit. Each time a low oil pressure condition is sensed the time delay will be of full duration.

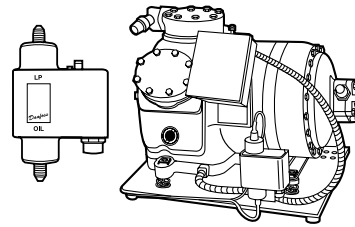
- Short cycle protection - select either 35, 65 or 100 second time delay periods to prevent rapid cycling (feature can also be bypassed)
- Manual Reset

P/N: **06DA660115**

SPECIAL GASKET FOR TRANSDUCER & BEARING HEAD CONNECTION

P/N: **06DA680-063**

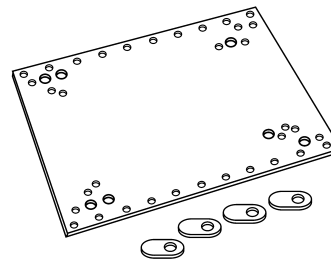
06D, 06E LUBE OIL CONTROL



P59N

P/N: **060B2008**

06D, 06E COMPRESSOR MOUNTING PLATE KIT

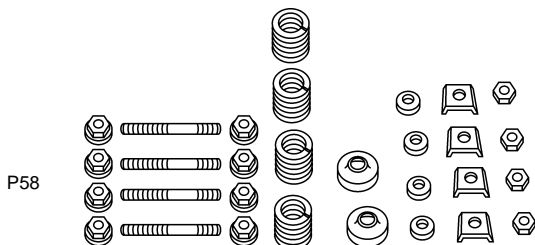
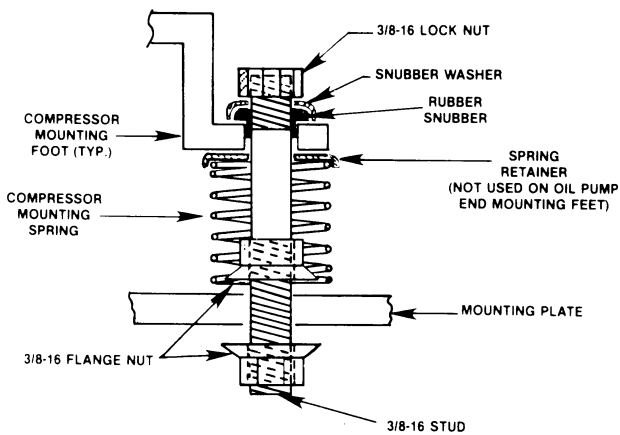


P60

This universal mounting plate kit will accommodate any size 06D or 06E compressor offered by RCD. The kit includes the predrilled mounting plate, spacers and template.

P/N: **06EA660096**

06D, 06E SUSPENSION KIT



P58

Suspension kit consists of mounting springs, studs, rubber snubbers, spring retainers, nuts and washers.

COMPRESSOR MODEL NO.	SUSPENSION KIT PART NO.	COMPRESSOR MODEL NO.	SUSPENSION KIT PART NO.
06ET150	06EA660089	06DR1096	06DA660058
250		0136	06DA660056
265		3166	06DA660056
175		7186	06DA660056
275		8206	06DA660056
299		7246	06DA660057
06EX150		2286	06DA660057
250		3376	06DA660057
166		06DM8086	06DA660058
266		3136	06DA660056
265	3166	06DA660056	
175	8186	06DA660056	
275	3376	06DA660057	
199	5376	06DA660057	
299	7246	06DA660057	
06EY150	06EA660089	8246	06DA660057
166		06CC016	06DA660057
175		018	06DA660057
099		124	06DA660057
06EZ150	06EA660089	228	06DA660057
266		337	06DA660057
175		550	06EA660089
199		665	06EA660089
06DX8186		675	06EA660089
7246	06DA660056 06DA660057	899	06EA660089
8246			
3286			
3376			
5376			

CARLYLE SEMI-HERMETIC COMPRESSORS/ACCESSORIES

SHIPPING PAD INFORMATION

MODEL	SUCTION VALVE BLANK OFF PAD	SUCTION VALVE PAD GASKET	DISCHARGE VALVE BLANK OFF PAD	DISCHARGE VALVE PAD GASKET
06DR109	-	6D23-1421	-	6D23-1421
06DR013, -316	6D43-2473	6D40-1131	-	6D23-1421
06DR718, -820	5F30-5012	6D68-1131	-	6D23-1421
06DR724, -228, -337	5F30-5012	6D68-1131	6D43-2473	6D40-1131
06DM808	-	6D23-1421	-	6D23-1421
06DM313, -316, -818	6D43-2473	6D40-1131	-	6D23-1421
06DM724, -824:				
2 BOLT SUCTION VALVE	6D43-2473	6D40-1131	6D43-2473	6D40-1131
4 BOLT SUCTION VALVE	5F30-5012	6D68-1131	6D43-2473	6D40-1131
06DM337, -537	5F30-5012	6D68-1131	6D43-2473	6D40-1131
06DX818	6D43-2473	6D40-1131	-	6D23-1421
06DX724, -824:				
2 BOLT SUCTION VALVE	6D43-2473	6D40-1131	6D43-2473	6D40-1131
4 BOLT SUCTION VALVE	5F30-5012	6D68-1131	6D43-2473	6D40-1131
06DX328, -337, -537	5F30-5012	6D68-1131	6D43-2473	6D40-1131
06ET150, -250	5F30-5012	6D68-1131	6D43-2473	6D40-1131
06ET265	5F30-5012	6D68-1131	5F30-5012	6D68-1131
06ET175, -275, -199, -299	06EA402653	06EA500181	5F30-5012	6D68-1131
06EX150, -250	5F30-5012	6D68-1131	6D43-2473	6D40-1131
06EX265	5F30-5012	6D68-1131	5F30-5012	6D68-1131
06EX166	5F30-5012	6D68-1131	6D43-2473	6D40-1131
06EX175, -275, -199, -299	06EA402653	06EA500181	5F30-5012	6D68-1131
06EY150, -165	06EA402653	06EA500181	6D43-2473	6D40-1131
06EY166, -175, -099	06EA402653	06EA500181	5F30-5012	6D68-1131
06EZ150, -266	06EA402653	06EA500181	6D43-2473	6D40-1131
06EZ175, -199	06EA402653	06EA500181	5F30-5012	6D68-1131

06DA501032 - Blank-off for both 06D & 06E unloader heads.

CARLYLE SEMI-HERMETIC COMPRESSORS/ACCESSORIES

06D,E CONTROL PANELS

The 06D & E Control Panels include:

- * 120 v Control Circuits
- * High, Low and Oil Pressure Switches
- * Time Guard
- * Compressor Contactor(s)
- * Control, Pump Out, and Timer Relays
- * Time Delay and Crankcase Heater Relay (06E panels only)
- * Fuse
- * Terminal Block

- * On-Off Switch
- * Compatible with other manufacturer's compressors (with similar electrical characteristics)

NOTE: The panels listed for the 06D compressors do not have overload protection in the panel; it is on the compressor. The 06E panels contain circuit breakers. Also, the pressure switches for the 06D panel are attached to a bracket for field installation. The 06E panels have the pressure switches wired and mounted to the back of the panel.

COMPRESSOR MODEL	VOLTAGE	MAX RLA	X/L OR P/W	CONTROL BOX MODEL
06DR1090GA3150	575	2.8	X/L	06DP140
06DR1090GA3250	208/230	8.6	X/L	06DP140
06DR1090GA3650	208/230	3.9	X/L	06DP140
06DR0130CA3150	575	5	X/L	06DP140
06DR0130CA3250	208/230	12.4	X/L	06DP140
06DR0130CA3650	460	6.2	X/L	06DP140
06DR3160CA3150	575	7.7	X/L	06DP140
06DR3160CA3250	208/230	19.3	X/L	06DP140
06DR3160CA3650	460	9.6	X/L	06DP140
06DR7180DA3150	575	7.7	X/L	06DP140
06DR7180DA3250	208/230	19.3	X/L	06DP140
06DR7180DA3650	460	9.6	X/L	06DP140
06DR8200DA3150	575	12.6	X/L	06DP140
06DR8200DA3250	208/230	31.4	X/L	06DP140
06DR8200DA3650	460	15.7	X/L	06DP140
06DR7240DA3150	575	12.6	X/L	06DP140
06DR7240DA3250	208/230	31.4	X/L	06DP140
06DR7240DA3650	460	15.7	X/L	06DP140
06DR2280DA3150	575	15.9	X/L	06DP140
06DR2280DA3250	208/230	39.5	X/L	06DP140
06DR2280DA3650	460	19.8	X/L	06DP140
06DR3370DA3150	575	17.9	X/L	06DP140
06DR3370DA3250	208/230	44.3	X/L	06DP160
06DR3370DA3650	460	22.1	X/L	06DP140
06DM8080GA3150	575	5	X/L	06DP140
06DM8080GA3250	208/230	12.4	X/L	06DP140
06DM8080GA3650	460	6.2	X/L	06DP140
06DM3130CA3150	575	7.7	X/L	06DP140
06DM3130CA3250	208/230	19.3	X/L	06DP140
06DM3130CA3650	460	9.6	X/L	06DP140
06DM3160CA3150	575	7.7	X/L	06DP140
06DM3160CA3250	208/230	19.3	X/L	06DP140
06DM3160CA3650	460	9.6	X/L	06DP140
06DM3370DA3150	575	17.9	X/L	06DP140
06DM3370DA3250	208/230	44.3	X/L	06DP160
06DM3370DA3650	460	22.1	X/L	06DP140
06DA8182AA3150	575	12.6	X/L	06DP140
06DA8182AA3250	208/230	31.4	X/L	06DP140
06DA8282AA3650	460	15.7	X/L	06DP140
06DA8242BA3150	575	15.9	X/L	06DP140
06DA8242BA3250	208/230	39.6	X/L	06DP140
06DA8242BA3650	460	19.8	X/L	06DP140
06DA3282BA3150	575	17.9	X/L	06DP140
06DA3282BA3250	208/230	44.3	X/L	06DP160
06DA3282BA3650	460	22.1	X/L	06DP140
06DA5372BA0150	575	22.9	X/L	06DP140
06DA5372BA1250	208/230	63.6	X/L	06DP175
06DA5372BA0650	460	28.6	X/L	06DP140

COMPRESSOR MODEL	VOLTAGE	MAX RLA	X/L OR P/W	CONTROL BOX MODEL
06ER150000	208/230	72	X/L	06PF175-1
			PWS	06PF240-1
05ER150100	575	31	X/L	06PF140-1
06ER150600	460	36	X/L	06PF140-2
06ER165000	208/230	87	X/L	06PF190-1
			PWS	06PF250-1
06ER165100	575	36	X/L	06PF140-3
06ER165600	460	44	X/L	06PF150-1
			PWS	06PF240-2
06ER175000	208/230	87	X/L	06PF190-1
			PWS	06PF250-1
06ER175100	575	36	X/L	06PF140-3
06ER175600	460	44	X/L	06PF150-2
			PWS	06PF240-2
06ER099000	208/230	135	X/L	06PF275-1
			PWS	06PF280-1
06ER099100	575	42	X/L	06PF160-1
06ER099600	460	68	X/L	06PF175-2
			PWS	06PF240-3
06EM150000	208/230	72	X/L	06PF175-1
			PWS	06PF240-1
06EM150100	575	31	X/L	06PF140-1
06EM150600	460	36	X/L	06PF140-2
06EM175000	208/230	112	X/L	06PF120-1
			PWS	06PF260-1
06EM175100	575	46	X/L	06PF150-3
06EM175600	460	56	X/L	06PF160-2
			PWS	06PF240-4
06EM199000	208/230	155	X/L	06PF290-1
			PWS	06PF295-1
06EM199100	575	62	X/L	06PF175-3
06EM199600	460	77	X/L	06PF190-2
			PWS	06PF250-2
06EA250000	208/230	87	X/L	06PF190-1
			PWS	06PF250-3
06EA250100	575	36	X/L	06PF140-3
06EA250600	460	44	X/L	06PF150-2
			PWS	06PF240-2
06EA265000	208/230	112	X/L	06PF120-1
			PWS	06PF260-1
06EA265100	575	46	X/L	06PF150-3
06EA265600	460	56	X/L	06PF160-2
			PWS	06PF240-5
06EA275000	208/230	135	X/L	06PF275-1
			PWS	06PF280-2
06EA275100	575	52	X/L	06PF160-1
06EA275600	460	68	X/L	06PF175-4
			PWS	06PF240-6
06EA299000	208/230	189	X/L	06PF220-1
			PWS	06PF225-1
06EA299100	575	75	X/L	06PF175-2
06EA299600	460	95	X/L	06PF120-2
			PWS	06PF250-1