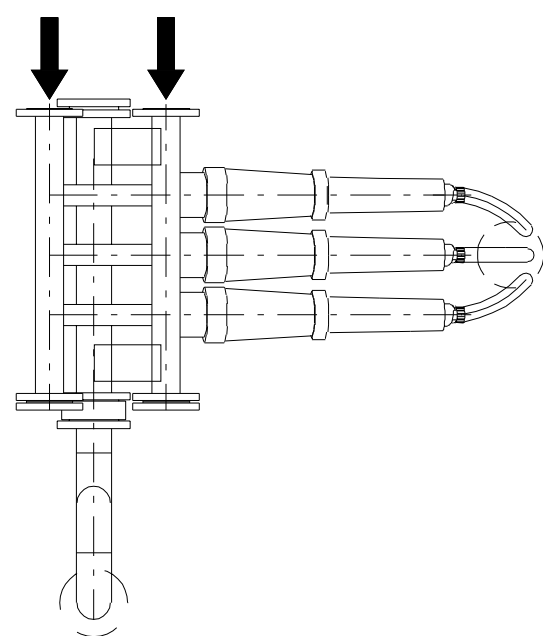


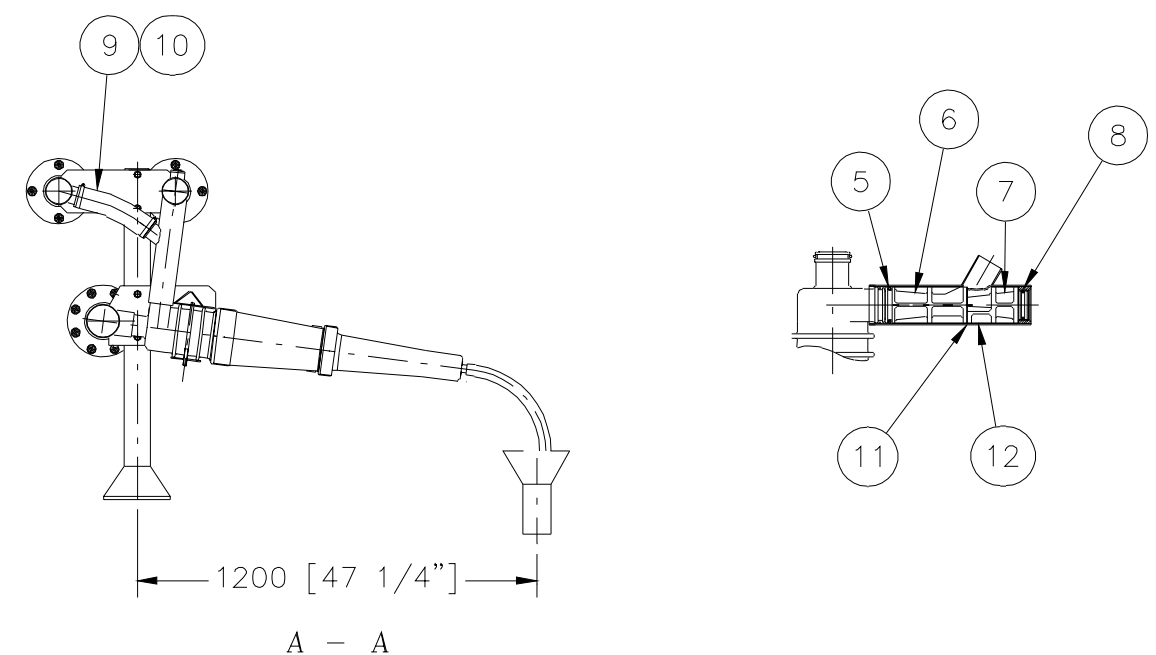
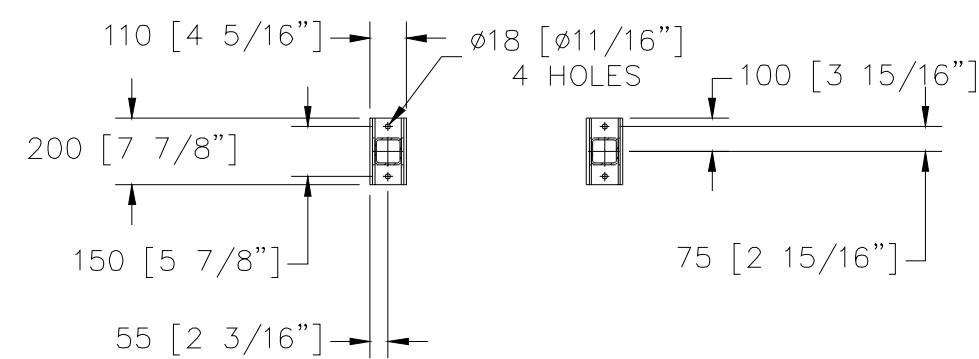
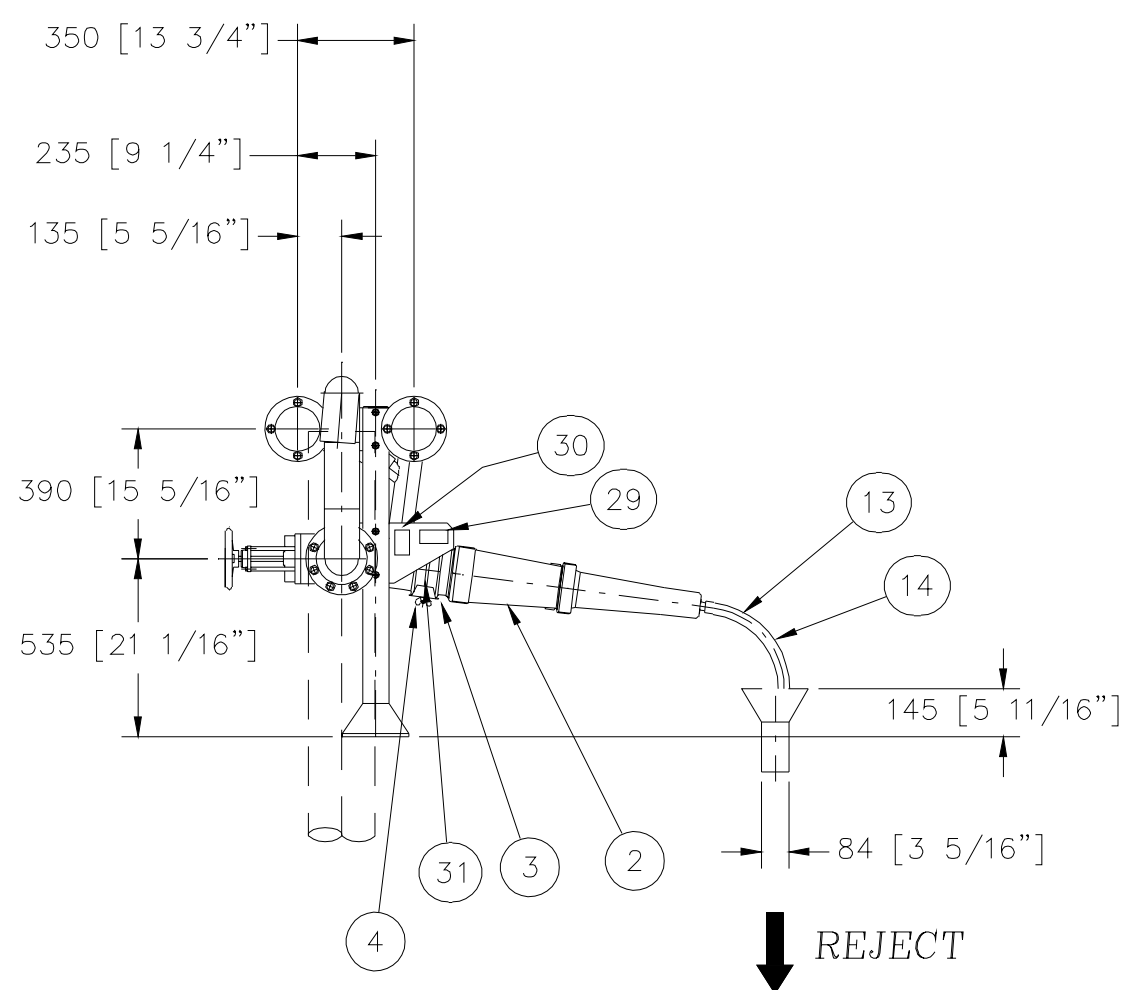
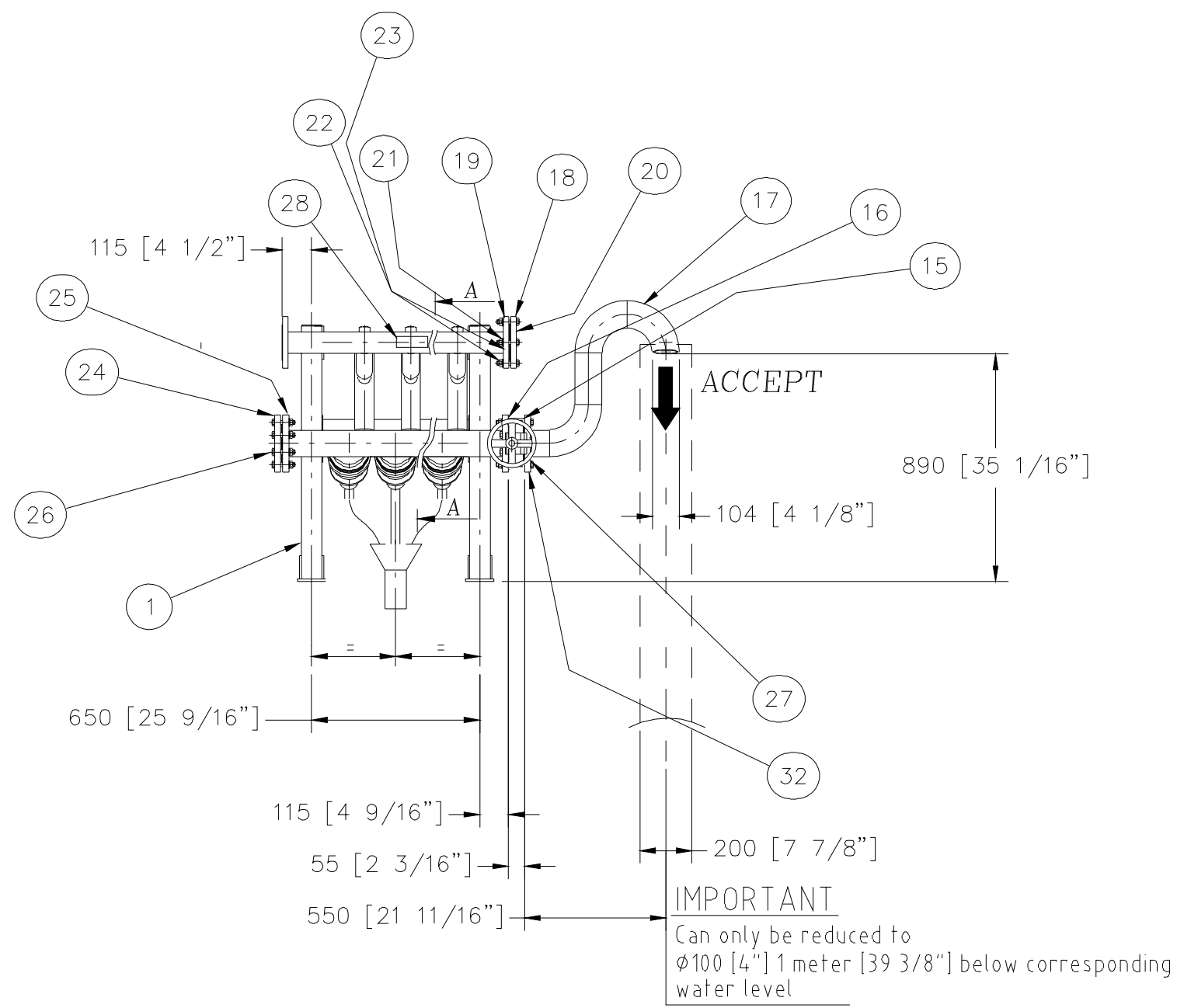
CERTIFIED CORRECT
 CUSTOMER: RESOLUTE, IROQUOIS FALLS DIV
 P.O. NO.: TRP0044990
 SERIAL NO. 11H5616 EQUIPMENT NO. NA00104517 S.O. NO.
 DATE: 01/18/2012 BY: Roger Becker

FEED DILUTION WATER
 Conn. 3" Conn. 3" 200 kPa [28 psi]



SAFETY NOTE
 PRESSURE PLATE MUST BE INSTALLED AND SECURED BEFORE OPERATION OF THIS UNIT.

1. Flanges ref. to: ANSI 150# VANSTONE
2. Dimensions in mm/inches
3. Net weight 110 kgs / 243 lbs
Operating weight 250 kgs / 551 lbs
4. Surface treatment:
Mini glassball blasted
5. Headers material:
SS 2343 (AISI 316L)
6. Structures material:
SS 2333 (AISI 304L)
7. Except where indicated otherwise, dimensional tolerance shall be $\pm 10\text{mm}$ ($\pm 3/8"$)
8. 3_ cleaners operating
0_ cleaners blanked off



QTY	PART NO.	DESCRIPTION (English)	ITEM	MATERIAL	SPL
8	1004 0090-02	5/8-11UNC X 1 1/2 LG HEX HEAD CAP SCREW	32		
1	PS1058Z	CAUTION SIGN	31		
1	PS00092	WARNING SIGN	30		
1	M100526-01	SERIAL NAMEPLATE	29		
1	M100527-02	COMPANY SIGN	28		
16	1004 0090-02	5/8-11UNC X 1 1/2 LG HEX HEAD CAP SCREW	27		
8	1004 0090-08	5/8-11UNC X 3 1/2 LG HEX HEAD CAP SCREW	26		
1	6085 5244-02	BLIND FLANGE	25		
1	6088 8908-51	FLANGE 4"	24		
48	1004 0958-07	5/8 FLAT WASHER	23		
12	1004 1044-06	5/8-11UNC HEX NUT	22		
8	1004 0090-07	5/8-11UNC X 3" LG HEX HEAD CAP SCREW	21		
2	6085 2990-204	GASKET	20		
2	6085 5244-18	BLIND FLANGE	19		
2	6088 8908-49	FLANGE 3"	18		
1	6093 0778-01	PIPE	17		
3	6085 2990-205	GASKET	16		
1	1004 0099-01	KNIFE GATE VALVE 4"	15	316 SS	
6	6088 8905-06	HOSE CLAMP	14		
3	1004 0067-07	HOSE 1" ID X 1 1/4" OD X 19 3/4" LG	13		
3	1004 0159-01	1/4-20UNC HEX LOCKNUT	12		
3	1004 0086-03	1/4-20UNC X 1" LG HEX HEAD CAP SCREW	11		
6	6088 8905-06	HOSE CLAMP	10		
3	1004 0067-09	HOSE 1 1/2" ID X 2" OD X 10 5/8" LG	9		
3	6094 0870-05	O-RING	8		
3	6088 4484-01	NOZZLE	7		
3	6088 6417-01	DIFFUSOR	6		
3	6088 8891-13	O-RING	5		
2	1004 0264-05	FINGER NUT	4		
1	6088 6421-02	PRESSURE PLATE	3		
3	6094 0976-01	CLEANER	2		
1	6091 3771-02	ERECTION DRAWING	1		
Qty=10	PART NO.	Description (English) Parts List	ITEM	MATERIAL	SPL

UNLESS OTHERWISE SPECIFIED ALL DIMENSIONS ARE IN METRIC

THIS DRAWING CONTAINS CONFIDENTIAL AND TRADE SECRET INFORMATION, IS THE PROPERTY OF GL&V, AND IS GIVEN TO THE RECEIVER IN CONFIDENCE. THE RECEIVER BY RECEPTION AND RETENTION OF THE DRAWING ACCEPTS THE DRAWING IN CONFIDENCE AND AGREES THAT, EXCEPT AS AUTHORIZED IN WRITING BY GL&V, IT WILL (1) NOT USE THE DRAWING OR ANY COPY THEREOF OR THE CONFIDENTIAL OR TRADE SECRET INFORMATION THEREIN; (2) NOT COPY THE DRAWING; (3) NOT DISCLOSE TO OTHERS EITHER THE DRAWING OR THE CONFIDENTIAL OR TRADE SECRET INFORMATION THEREIN; AND (4) UPON COMPLETION OF THE NEED TO RETAIN THE DRAWING, OR UPON DEMAND, RETURN THE DRAWING, ALL COPIES THEREOF, AND ALL MATERIAL COPIED THEREFROM.

WARNING:
 THE EXPORT OR REEXPORT OF THIS DRAWING OR A PRODUCT PRODUCED BY THIS DRAWING IS SUBJECT TO U.S. EXPORT ADMINISTRATION REGULATIONS AND OTHER APPLICABLE GOVERNMENTAL RESTRICTIONS OR REGULATIONS.

ANSI Y14.5 SYMBOLS	UNLESS OTHERWISE SPECIFIED, THE FOLLOWING STDS. APPLY DIM & TOL. ANSI Y14.5 SURFACE FINISHES-ISO 1302 ALL DIM. APPLY TO FINISHED PART	NEXT ASSY.
⊕ TRUE POSITION	REMOVE ALL BURRS AND SHARP CORNERS AND COUNTERSINK ALL TAPPED HOLES TO MAJOR DIAMETER	REF.DWG. 6093 0757
⊥ PERPENDICULARITY		DRAWN DATE 12/29/2011
∥ PARALLELISM		CHECKED DATE
∠ ANGULARITY		APPROVED DATE
⌒ ROUNDT		
△ PROFILE OF A SURFACE		
○ ROUNDNESS		
— STRAIGHTNESS		
◎ CONCENTRICITY		
⊗ MAX MATL CONDITION		
⊘ CYLINDRICITY		

GLV NASHUA N.H.

TITLE
 RESOLUTE IROQUOIS FALLS, ON CLEANPAC 350 FMZ 0/3 STAGE 4

DRAWING NO. 000260N70

SCALE NONE THIRD ANGLE PROJECTION SHEET 1 OF 1